



333 Bayview Avenue
Amityville, New York 11701
For Sales and Repairs, (800) 645-9445
For Technical Service, (800) 645-9440
Publicly traded on NASDAQ Symbol: NSSC

© NAPCO 2006

SE-NL-MOD

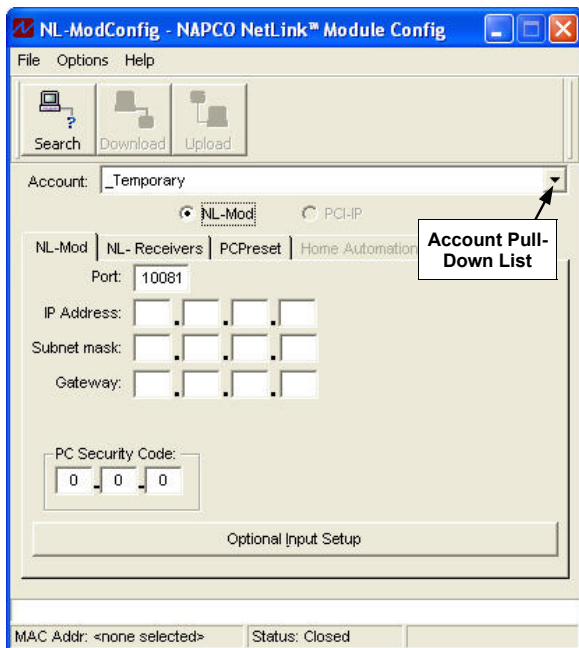
Firmware Upgrade Instructions

WI1528 4/06

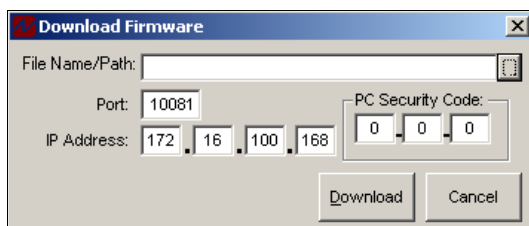
The enclosed CD contains the latest firmware updates for the NAPCO NetLink™ NL-MOD. Upgrade the NL-MOD firmware as follows:



1. Double-click the **NL-ModConfig** icon (shown above) to run the software. The NL-MODCONFIG main screen appears (see below).

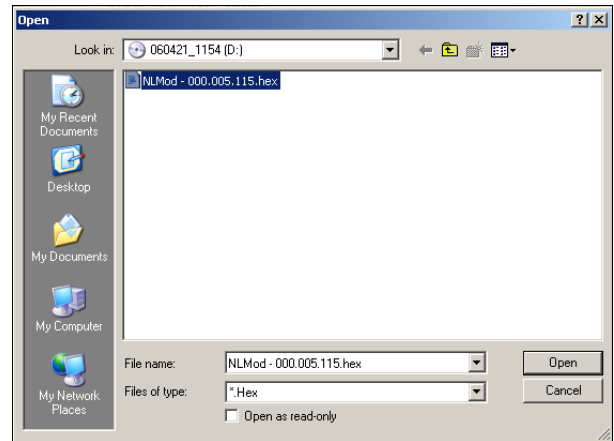


2. Select the Account you wish to download from the **Account** pull-down list.
3. Click **File, Firmware Download** and the **Download Firmware** dialog appears:

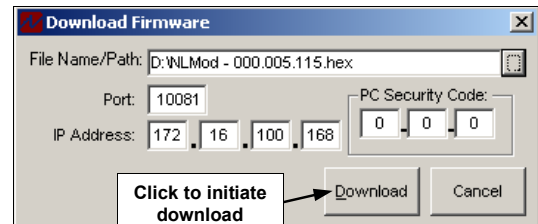


4. In the field provided, enter the complete path and file name of the new firmware--**or**--click the "..." button to browse for the location.

To load firmware directly from the enclosed CD, browse to the current CD drive letter (as shown in the **Open dialog, below, the drive letter is typically D:), highlight the file and click **Open** to insert the path of the file into the **Download Firmware** dialog .**



The other fields will be populated with data from the current Account. In the **Download Firmware** dialog (shown below) click **Download** to initiate the downloading process.



5. The NL-MODCONFIG software will confirm that the download was accepted by the NL-MOD.

Note: Please wait two (2) minutes to allow the NL-MOD to process this new data before sending any signals to the NetLink Receiver software.