



333 Bayview Avenue  
Amityville, New York 11701  
For Sales and Repairs, (800) 645-9445  
For Technical Service, (800) 645-9440  
Publicly traded on NASDAQ Symbol: NSSC

© NAPCO 2006

# NAPCO NET.LINK NL-ROUTER

## SETUP AND CONFIGURATION INSTRUCTIONS

WI1563 6/06

### GENERAL ROUTER SETUP REQUIREMENTS

1. **Select a "Virtual IP Address"** – This is the address that a receiver will take on when it becomes the "Active" Receiver. Pick an address in the *Static* IP range and not in the DHCP range of the network.
2. **Select a Port Number** –The Receiver is defaulted to listen for incoming packets on Port Number 5001 and each NL-MOD is defaulted to send packets to Port Number 5001, so if this number is not changed then it is your selected Port Number, otherwise make sure the Receiver and each NL-MOD are configured with your desired Port Number.
3. **Setup Port Forwarding** - In your router, port forward the selected Port Number to the selected Virtual IP Address.
4. **Check the ARP Cache refresh** – The Router must be set for a low value of about 5 seconds or less so that a backup receiver can come online quickly. Some routers defaulted refresh rates are in the order of 6 minutes or more.

### NETGEAR ROUTER QUICK START

#### Hardware Setup:

1. Plug the router into a power source.
2. Plug in the network cable from the first Net.Link Receiver into port 1 of the router.
3. Plug in the network cable from the second Net.Link Receiver into port 2 of the router.
4. Connect the Service Terminal PC into port 3 of the router.
5. Plug the Internet cable into the Internet connection of the router.
6. Power on both receivers and the service terminal.

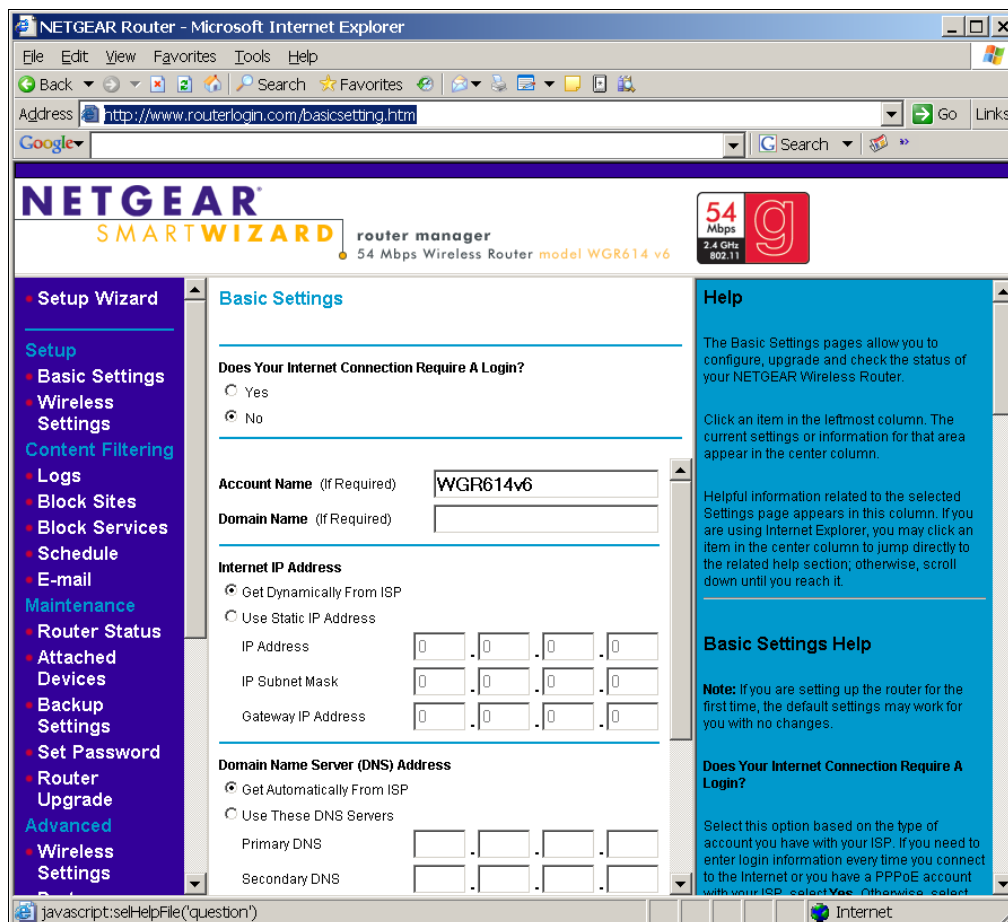
**Note:** A diagram of the Port layout is located on the bottom of the NETGEAR router housing.

#### Router Configuration:

1. From the web browser of the Service Terminal PC, log in using the address below with the User Name (**admin**) and Password (**password**):

<http://www.routerlogin.com/basicsetting.htm>

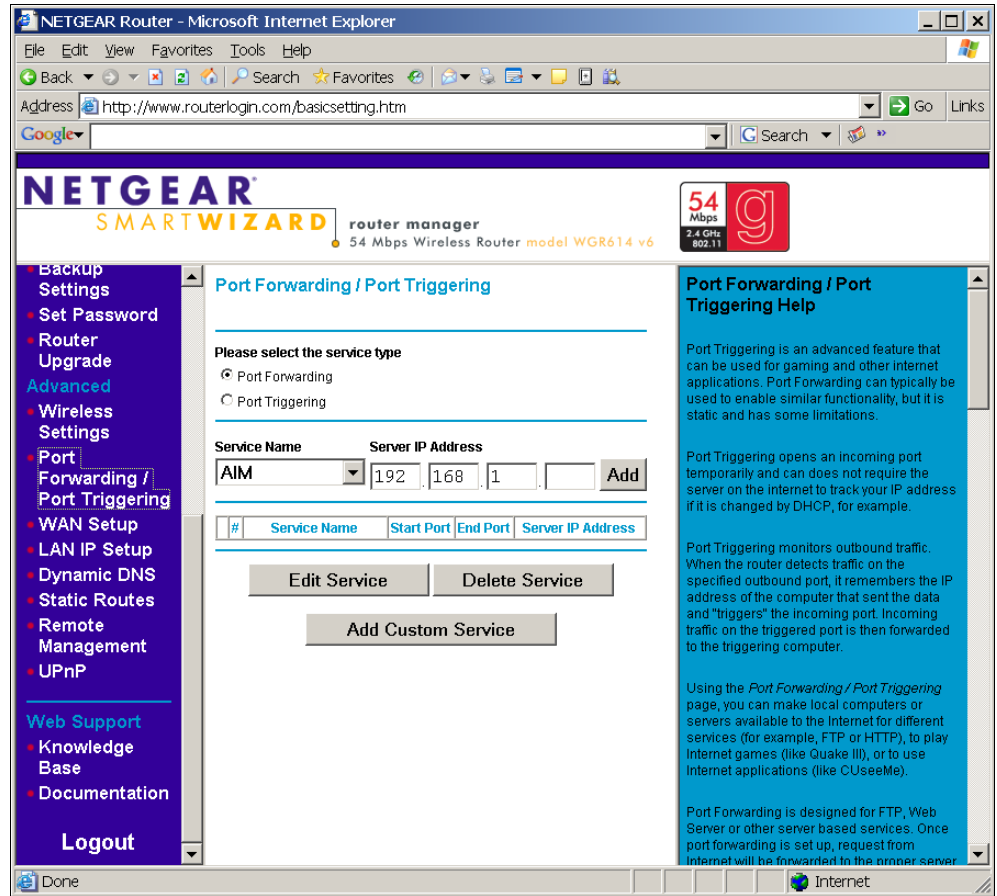
Do **NOT** use their *Setup Wizard*. The following screen appears:



- Using the left pane scroll bar, scroll down to and click on **"Port Forwarding / Port Triggering"**.

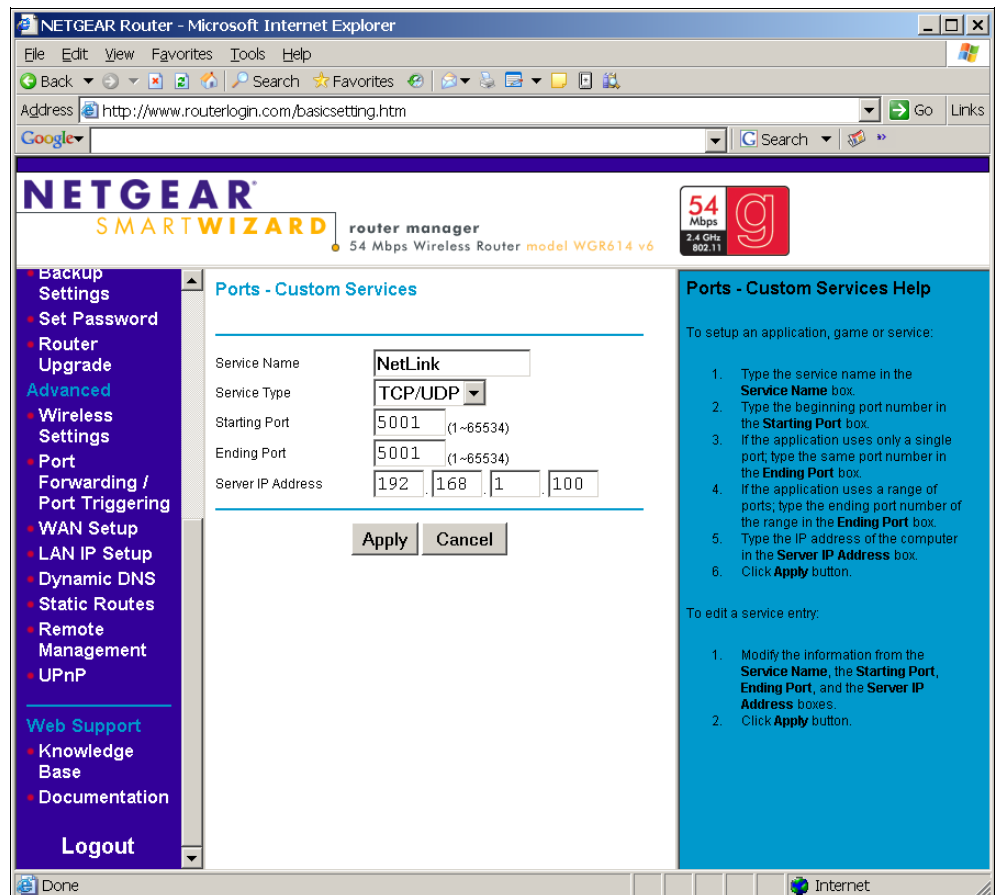
The screen displayed at right appears:

Click the **Port Forwarding** radio button.



- In the screen displayed above in step 2, click the **"Add Custom Service"** button, and the screen displayed at right appears:

In this screen, enter the data listed on the next page.



4. Listed below are examples of suggested defaults that can be entered in the previous screen (displayed in step 3).

**Service Name = "NetLink"**  
**Service Type = "TCP/UDP"**  
**Starting Port = 5001**  
**Ending Port = 5001**  
**Server IP Address = "192.168.1.100"**

**Note:** 5001 is the Receiver's default Port Number--if another Port Number was programmed into the NL-MOD, use that Port Number for the router's *Starting* and *Ending* Port Numbers.

In addition, the "Server IP Address" is the static Virtual IP Address that is shared between the two Net.Link Receivers. The default DHCP range of this router is 192.168.1.2 through 192.168.1.51. Select a Virtual IP Address greater than 192.168.1.51 (we recommend using 192.168.1.100).

5. After the data is entered, click "**Apply**" and a screen similar to the screen displayed below will appear.

You can now close the browser and start using the Receivers.

The screenshot shows the Netgear Router Manager web interface in Microsoft Internet Explorer. The browser address bar shows `http://www.routerlogin.com/basicsetting.htm`. The page title is "NETGEAR SMARTWIZARD router manager" for a "54 Mbps Wireless Router model WGR614 v6". The main content area is titled "Port Forwarding / Port Triggering".

Under "Please select the service type", "Port Forwarding" is selected. Below this, there is a form to add a service:

Service Name	Server IP Address
AIM	192.168.1.100

Buttons for "Edit Service", "Delete Service", and "Add Custom Service" are visible below the table.

A table lists the current services:

#	Service Name	Start Port	End Port	Server IP Address
1	NetLink	5001	5001	192.168.1.100

On the right side, there is a "Port Forwarding / Port Triggering Help" section. It explains that Port Triggering is an advanced feature for gaming and other internet applications, and that Port Forwarding is designed for server-based services like FTP, Web Server, or HTTP.

The left sidebar contains navigation links: Backup Settings, Set Password, Router Upgrade, Advanced, Wireless Settings, Port Forwarding / Port Triggering (selected), WAN Setup, LAN IP Setup, Dynamic DNS, Static Routes, Remote Management, UPnP, Web Support, Knowledge Base, Documentation, and Logout.

