



NAPCO®

333 Bayview Avenue
Amityville, New York 11701
For Sales and Repairs, (800) 645-9445
For Technical Service, (800) 645-9440
Publicly traded on NASDAQ Symbol: NSSC

© NAPCO 2007

KEYPAD TERMINAL REWIRE KIT DX1 TERM RW KIT INSTALLATION INSTRUCTIONS

WI1625 6/07

THIS INSTALLATION PROCEDURE IS INTENDED FOR QUALIFIED SERVICE PERSONNEL ONLY.

DESCRIPTION

The DX1 TERM RW KIT (or the DX1AG TERM RW KIT for silver cases) is a retrofit kit that allows the DX1 keypad to be wired using a low-profile terminal strip instead of the standard wiring harness. The wiring harness provides 4 zone inputs and a PGM output. When converted to terminals with the conversion kit, only 2 zone inputs are available and there is no PGM output. **Note:** This DX1 TERM RW KIT can also be used with the DX8-LCD keypad, but the addition of the resistors on the PC board are not required.

This rewire kit requires the soldering of the terminal strip to the 13 pin male connector. Two 2.2K SMD surface mounted resistors must also be soldered to the printed circuit board. An image of the finished circuit board is shown in Fig. 1 below:

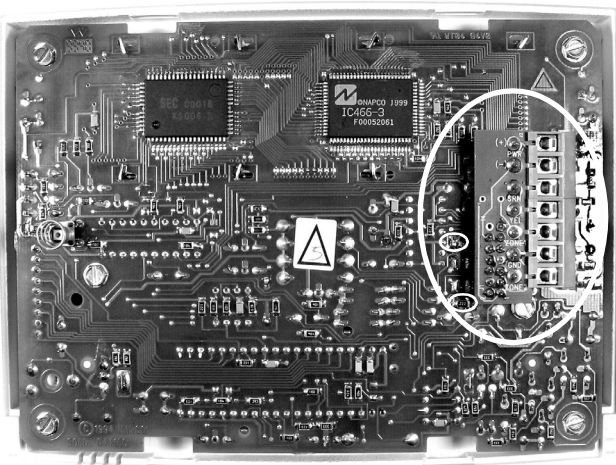


Fig. 1: Completed circuit board. The added terminal strip (large circle at right) is located next to the two added resistors (two smaller circles).

The kit also includes a modified rear keypad case that includes a larger opening to accommodate the added terminal strip. In addition, the keypad "fish paper" must be modified with scissors.

IMPORTANT: If you elect NOT to solder these two resistors into the circuit board, then zones 3 and 4 of the keypad EZM will always display open if they are programmed to an area. Therefore, a solution to not soldering the resistors would be to simply NOT program the associated zones to any area in the system.

CONNECT & SOLDER TERMINAL STRIP

Note: For access to the PC board, first remove the two right-hand screws holding the "fish paper" in place. Fig. 2 displays the location of the pins on the back of the keypad PC board into which the terminal strip is placed.

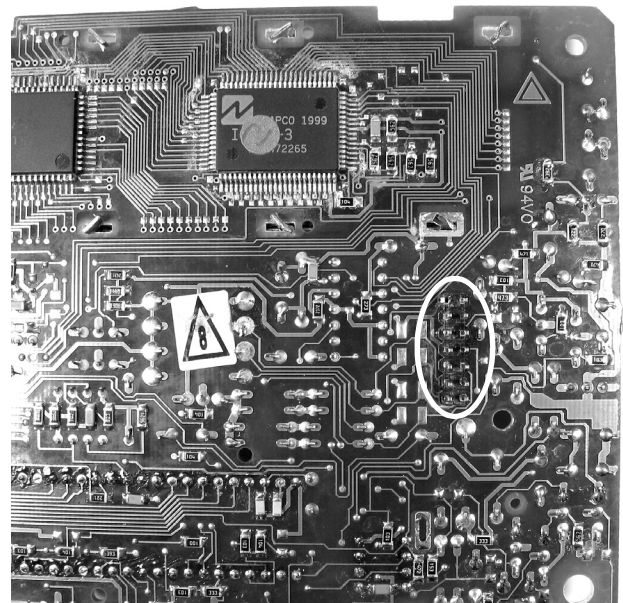


Fig. 2: Location of pins on the PC board that are used by the terminal strip (circled)

As shown in Fig. 3 below, the holes in the terminal strip match the pins on the PC board.

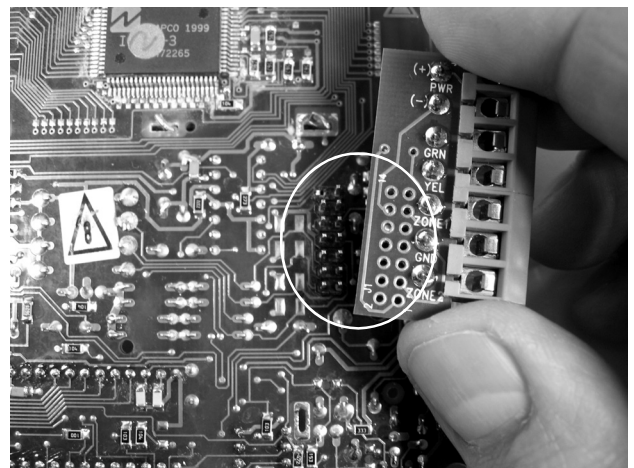


Fig. 3: The pins on the PC board match the holes in the terminal strip (circled)

Find the pins and simply insert the terminal strip holes through the pins. Ensure that the pins are not bent and that each pin is inserted through each hole in the terminal strip. Solder each pin in place.

PLACE AND SOLDER 2 RESISTORS

(Note: Not required on the DX8-LCD keypad). To the left of the pins on the PC board are two locations where two 2.2K SMD surface mounted resistors must also be soldered. The exact locations are shown in Figs. 4 through 6 below:

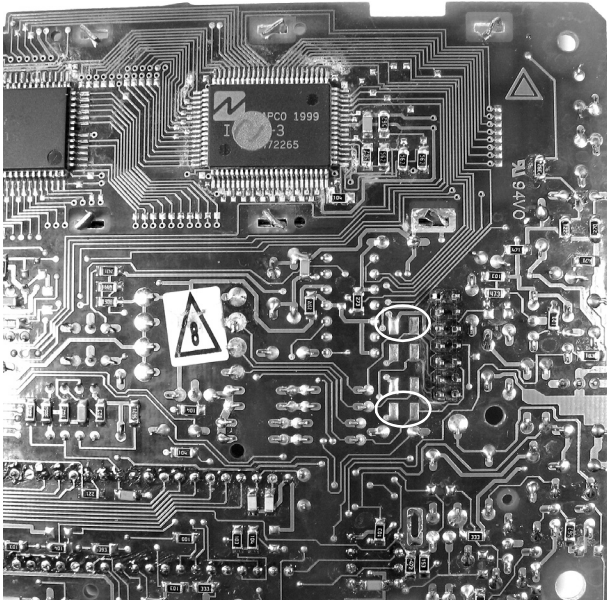


Fig. 4: Location for the two resistors on the PC board.

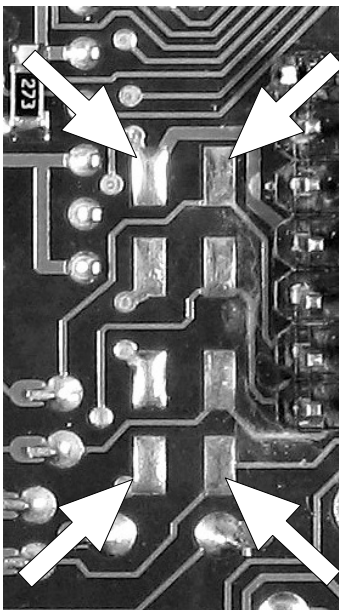


Fig. 5: A closer image of Fig. 4. Each resistor must bridge each gap indicated by each pair of arrows.



Fig. 6: A close up image of a completed installation.

CUT EXISTING FISHPAPER

Fig 7 below details the modifications necessary for the keypad "fish paper". Simply use scissors to cut the paper using the dimensions indicated.

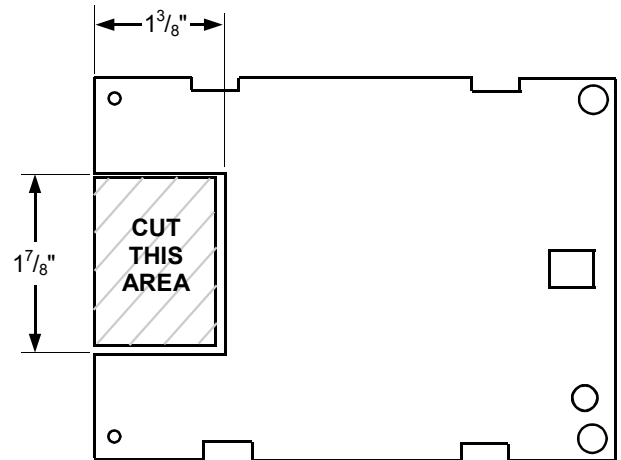


Fig. 7: Cut existing "fish paper" with scissors.

Replace "fish paper" inside keypad case.

PLACE LABEL

Affix the supplied label on the face of the "fish paper", on top of the existing label. With the DX1 keypad use label LA2641 (shown below); with the DX8-LCD, use LA2645.

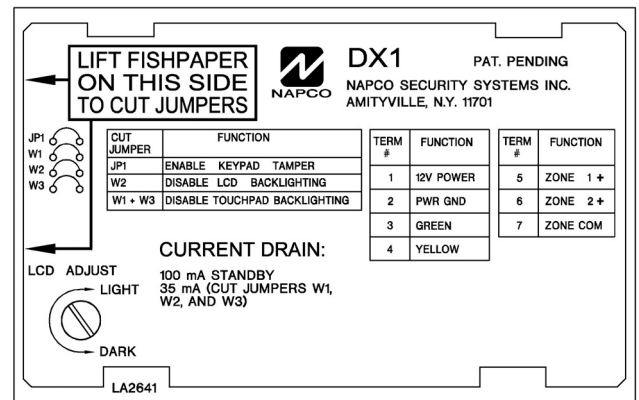


Fig. 8: Affix the supplied label on the face of the "fish paper". Label LA2641 is shown above.

PARTS LIST

The DX1 TERM RW KIT (for white case) or the DX1AG TERM RW KIT (for silver case) includes the following items:

1. Terminal Strip Assembly.
2. Modified rear keypad case.
3. Jumper description label (LA2641 or LA2645).
4. Two (2) 1206 2.2K SMD ("Surface Mounted Device") resistors.
5. WI1625 Installation Instructions.