



333 Bayview Avenue
Amityville, New York 11701
For Sales and Repairs, (800) 645-9445
For Technical Service, (800) 645-9440
Publicly traded on NASDAQ Symbol: NSSC

© NAPCO 2007

NAPCO AccessPro Multi-Processor Set Up Tech Note

WI1607 5/07

This document describes the required steps to properly setup the NAPCO AccessPro application on a multi-processor machine.

Important Note:

The steps required to properly setup the NAPCO AccessPro application on a multi-processor machine *must be performed each time AccessPro is started on the machine*. The AccessPro settings are NOT saved!

In addition, if you do not know how to perform these setup procedures, please call Tech Support or ask your System Administrator. Improper setup can cause unpredictable results.

Step 1:

Start the AccessPro application. by clicking on the desktop icon or from the **Start** button (click **Start, Program Files, AccessPro**).

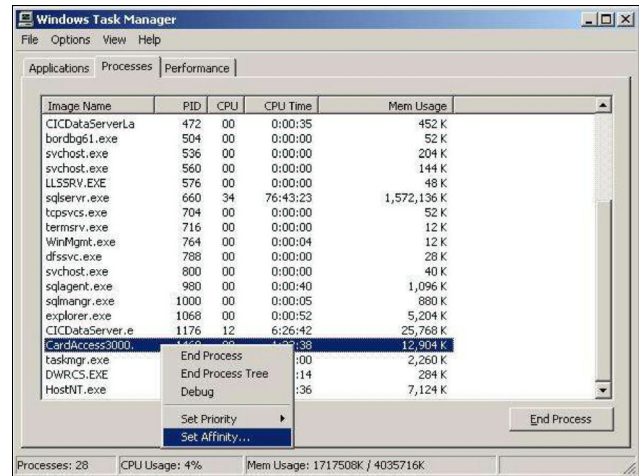
Step 2:

Start **Windows Task Manager** by pressing Ctrl + Alt + Delete and click on the **Task Manager** button.

In **Windows Task Manager**, open the *Processes* tab and find the **AccessPro** process.

Step 3:

After you find the **AccessPro** process, right-click and select the "Set Affinity" menu item.



The **Processor Affinity** dialog appears. Uncheck all the available check boxes, except for the first one ("CPU 0") and click **OK**. Close the **Windows Task Manager** and resume use of AccessPro.

