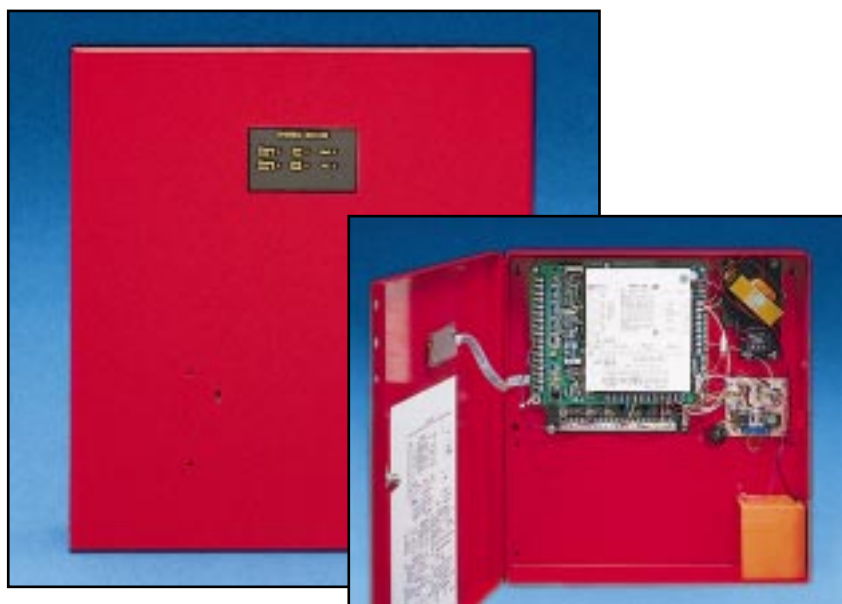


S P E C I F I C A T I O N S



XL-4CPO system shown with optional system keypads, 7005L-RD and 7005L

XL-4CPO

Combination Fire/Burglary Control/Communicator 8-72 Zones

STANDARD FEATURES:

- 8 Zone EEPROM Fire Control/Communicator expandable to 72 zones
- Combination commercial fire/burglary panel
- Handles various fire devices including smoke detectors, thermostats, pull stations, water flow and sprinkler supervision.
- Supervision of dual telephone lines and bell output
- Hardwire or multiplex expansion capability
- 72 zone capacity through multiplex expansion
- Partitioning (up to 8 separate subsystems)
- Zone grouping capability within partitions
- 64 User codes with 7 authorization levels
- Keypad and remote programming
- Remote uploading/downloading and remote commands
- System log retains past 128 events with option to automatically transmit log to remote or local printer
- Fuseless design eliminates unnecessary service calls
- Fire Installation Applications
 - NFPA 72A local protective signaling
 - NFPA 71 central station signaling
 - NFPA 74 household fire warning
 - UL 864
- Enclosure dimensions 16 x 18 x 4
Keypad dimensions: 6.5 x 4.5 x 1

SYSTEM COMPONENTS

XL-4CPO	Combination Commercial Fire/Burglary system. Configuration includes: control panel housed in attack proof enclosure, dual phone line and bell monitor, system master keypad, system indicator light display, wired in transformer. Keypads available separately.	7130	Local printer interface module. Allows connection of serial printer (300 baud) for local output of system log.
7105	Hardwired expander module. Provides 8 additional hardwired zones.	7005L	LCD keypad features large two-line by sixteen character display.
7120	Multiplex expander. Plug-in module provides two wire 64 point bus.	7005L-RD	Similar to 7005L except keypad is housed in red plastic case.
		7005	LCD keypad with standard size display.
		7015	Keypad with separate zone indicator lights, displays status for first 16 zones.
		7700	EZ-Mate PC Downloading software

XL - 4 C P O S P E C I F I C A T I O N S

PROGRAMMING

- Programmable locally through LCD keypads, or remotely through PC Downloading Software.
- Default lockout option to prevent hostile account takeovers.
- Option to inhibit keypad programming.
- Local programming secured through Installer Code.
- EEPROM memory retains programmable features and current status.
- Factory default characteristics simplify installation.

ZONES

- 8 fully programmable EOL supervised hardwired zones on circuit board.
- Expansion through plug in module. Options: model 7105 (8 zone hardware expander), 7120 (Multiplex bus expander, 64 zones).
- Fire zone types include: smoke detectors, thermostats, pull stations, water flow and sprinkler supervision.
- Zone programming flexibility including type and reporting characteristics.
- Four programmable keypad emergency conditions.
- Programmable sixteen character descriptors for each of 72 zones.
- Selectable alarm (16) and trouble (8) types.
- Programmable Central Station reporting & restore codes by zone.
- Keyswitch capability through any zone.
- Chime option by zone.
- Pulse count option by zone.
- Commands to view zone descriptions on LCD keypad.
- Zone grouping capability allows creation of groups within each partition for the purpose of bypassing and alarm transmission.

SYSTEM OPTIONS

- Programmable dialer and bell lockout feature.
- Accurate real time clock, time programmable by installer or authorized user.
- Flexible system test function with programmable frequency (12 hour, 24 hour or weekly transmission), and selectable time of day.
- Two programmable entry/exit delay times.
- CS reporting option to verify remote download request.
- Sounder Ringback, and bell test at arming options.
- Auto-unbypass option.

MULTIPLEX CAPABILITY

- Multiplex zone expansion option through 7120 module.
- System supports two wire buss capable of 64 zones of protection.
- Two wire multiplex bus provides power and supervised data path between the control panel and the multiplex accessories.
- Multiplex accessories available; 2 or 8 point modules for interfacing conventional alarm sensors to multiplex buss.
- Convenient two conductor wiring of multiplex loops for easy installation.
- Programmable zone characteristics for each multiplex point.

PARTITIONS

- 8 partitions (subpanels) per control panel.
- Each will contain a primary & secondary Central Station account number.
- Zones and keypads are assigned to the desired partition.
- Users codes can be assigned to multiple partitions.
- Partition descriptor, sixteen characters, uniquely identifies each subsystem.
- Multi partition feature allows secure operation of the system through any keypad by authorized users.
- Arm or Disarm all partitions through a single keypad by authorized user.
- Authorized users can alter partition assignments through the keypad.

USER CODES

- 64 user codes, with authorization levels (7).
- Four digit or seven digit user codes, systemwide option.
- Programmable Open/Close ID's for each user.
- Programmable partition access by user, access to partitions.
- Option to transmit O/C signals by user by partition.
- Ambush code capability.
- Arm or disarm all partitions through any keypad by authorized users.
- Quick arm, bypass, forced arming commands available.
- Arm only user code.

OUTPUTS

- Trigger outputs (8 voltage level triggers).

CENTRAL STATION COMMUNICATIONS

- Transmission to two separate CS telephone numbers
- Three or four digit account numbers.
- Transmission formats include 10PPS, 20PPS, 40PPS 4x2, FBI Superfast, BFSK, ADEMCO Express and Point ID formats.
- Pulse, touch-tone, or adaptive dialing (tone backed up by pulse).
- Dial tone detection option.
- Installer options for each of the remote command capabilities.

POWER SPECIFICATIONS

- Special watchdog circuitry insures integrity of microprocessor.
- 24 hour battery load test and continuous low battery monitoring.
- Total Control Aux. Power: 12 VDC, Regulated @ 900 mA.
- Keypad current = 250 mA, max., Smoke current = 150 mA. max.
- Aux. current = 500 mA. max. if keypad and smoke power is used, or 900 mA. max. if keypad and smoke power is not used.
- Alarm Power: 12 VDC, Regulated @ 2 Amps.

KEYPADS

- Up to 8 LCD keypads per system (may require auxiliary power supply).
- Backlit keypads.

REMOTE COMMANDS

- Patented answering machine detection (AMD) for secure communications with Alarm Company without interruption to the premise telephone.
- Programmable callback scheme prevents unauthorized access.
- Remote Downloading and uploading, from Alarm Company location.
- Interactive programming sessions permit control panel to remain on-line with the downloading computer during remote communications.
- Remotely arm, disarm, bypass, read system status, and device control.

SYSTEM LOG

- Panel retains activity log (128 events max).
 - System log viewable locally at LCD keypad or from Alarm Company.
 - Programmable transfer of system activity to a remote or local* printer, automatically on either a daily, weekly or monthly basis.
- *Local printer requires 7130 module.

LISTINGS

- Fire Listings: NFPA 72A, NFPA 71, NFPA 74, UL 864
- UL Mercantile Burglary Listings: local grade A, police connect grade A, grade AA, central station grade B.
- California State Fire Marshal (CSFM).

VALID ONLY WITHIN NORTH AMERICA



FIRE BURGLARY INSTRUMENTS, INC.

A Subsidiary of Pittway Corp.
149 Eileen Way, Syosset, NY 11791
800-645-5430 • 516-921-8666