

## MODEL 884

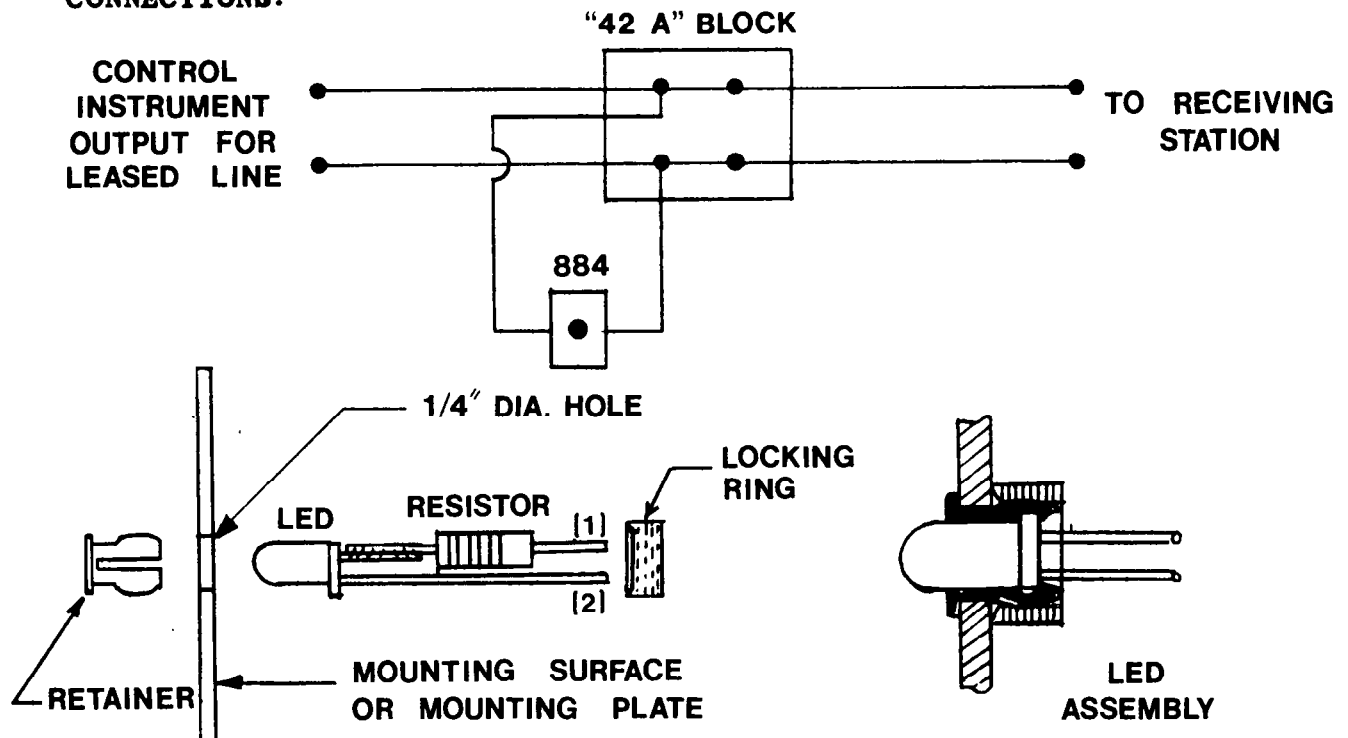
### LEASED LINE MONITOR INSTALLATION INSTRUCTIONS

**FEATURES:** Monitors the telephone leased line on the police connect relay with visible indication of power output from the control unit.

Typical operation provides for green light under normal output conditions. In the event of line failure the light will be out. If reversal should occur, the green light will change to red.

This unit uses a L.E.D. to provide for extremely long lamp life, mounted on a stainless steel plate. Plate mounting provides for simple installation near telephone company "42 A" block.

#### CONNECTIONS:



TERMINAL (1) POSITIVE  
TERMINAL (2) NEGATIVE RED

TERMINAL (1) NEGATIVE  
TERMINAL (2) POSITIVE GREEN

#### NOTE:

SHORT LEAD OF LED  
IS TERMINAL (1)