

Ademco Group

Compass Network Downloader

ADEMCO
GROUP

WINDOWS® compatible
network downloader

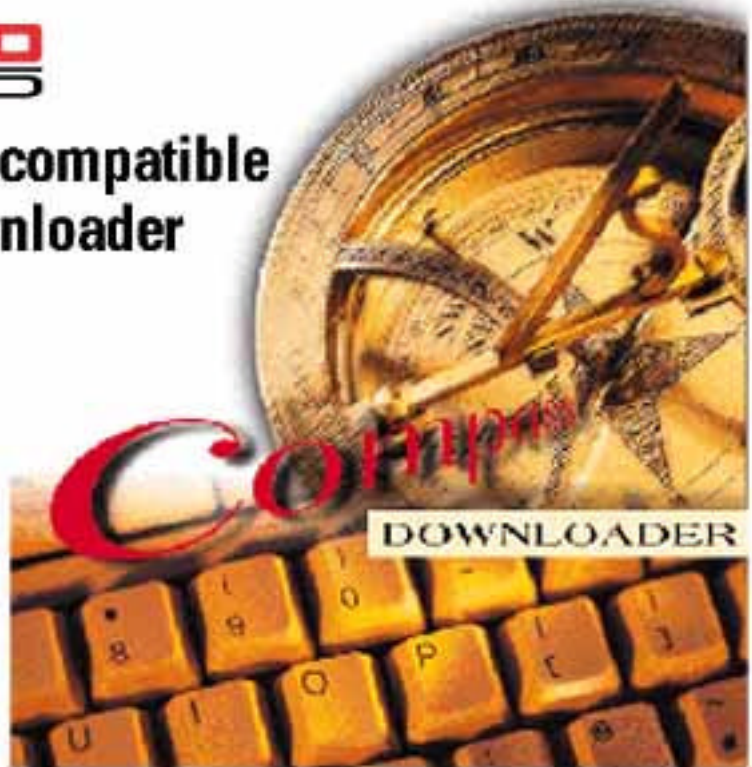


Table of Contents

Section 1. Introduction

Chapter 1: Welcome	1-1
Key Features	1-1
System Requirements	1-2
Using This Manual	1-2
Windows Basics	1-3
Downloader Menu Structure	1-4
Chapter 2: Installation	2-1
Installation on a Single PC	2-1
Installation on a Network	2-2
Log-On Procedure	2-3
Chapter 3: Quick Start	3-1
Setting Up The Downloader	3-1
Creating A New Account	3-3
Getting Online With The Control Panel	3-3
DOS V-Link Conversion	3-6

Section 2. Downloader Setup

Chapter 4: Downloader Communications Setup	4-1
Modem Setup	4-2
Add Modems	4-4
Edit Modem	4-5
Delete Modem	4-5
Central Station I.D.	4-5
Chapter 5: Defining System Operators	5-1
Adding New Operators	5-2
Changing Operator Names	5-4
Changing Operator Passwords	5-4
Updating Operator Information	5-5
Deleting Operators	5-6
Logging Out	5-6

Section 3. Account Setup and Operation

Chapter 6: Customer Information	6-1
Adding Customer Accounts	6-1
Converting Accounts from the V-Link Downloader	6-2
Modifying Customer Accounts	6-4
Deleting Customer Accounts	6-5
Restoring/Purging Customer Accounts	6-5
Sorting Customer Data	6-6
Searching for Customer Accounts	6-7
User Defined Fields	6-7
Chapter 7: Control Panel Information	7-1
Programming the Control	7-1
Alarm Control Programming Overview	7-1
Programming an Alarm Control	7-4
Using Templates	7-6
Creating New Templates	7-6
Modifying Templates	7-7
Deleting Templates	7-8
Converting Customer Data To Templates	7-8
Using A Template To Create A New Account	7-8
Copying An Account	7-9
Chapter 8: Communicating With The Control	8-1
Getting Online	8-1
Control Communications	8-1
First Communication	8-3
Answering Machine Defeat	8-4
On-Line Commands	8-4
Setting the Time	8-13
Shutdown	8-14
Test Report	8-15
Appendix A	A-1

Welcome

Welcome to the ADEMCO Compass Downloader. It provides everything you need to program and control an alarm system remotely from the comfort of your office. In addition, it gives the operator the ability to download and upload alarm control information, to compare the uploaded and saved information, and to view the results either on screen or in a printed report.

By using the Compass Downloader, programming can be performed at the office prior to installation, or can be downloaded from a remote location or at the job site using a PC Laptop with an ADEMCO 4100SM Serial Module (where the control panel supports it). The control panel at the subscriber's premises must be connected to the existing telephone line to download from a remote location.

Key Features

The ADEMCO Compass Downloader includes many new features., such as:

- DOS Downloader Conversion Utility to quickly convert DOS accounts to the Compass Downloader.
- Templates for quick and easy programming of control panels.
- A full search utility to help you quickly find a programming field.

- Multi-tiered operator levels for full flexibility.
- “View Change” utility to see the changes made before saving.
- “View History” utility to see what changes in programming have been made previously.

System Requirements

To run the ADEMCO Group Compass Downloader, you will need a 486 33MHz PC or better with 30 MB of available hard disk space and at least 8 MB of RAM (12MB is preferred). The downloader program will run on Windows 3.X, Windows 95, or Windows NT.

Using This Manual

This manual will guide you through the many operations of the Compass Downloader. It is arranged in the order in which operations should be performed until you become familiar with the program.

The manual is divided into three sections:

Section 1. Introduction

Section 2. Downloader Setup

Section 3. Account Setup and Operation

Section 1 includes basic information about the Compass Downloader, such as Key Features, the Downloader Menu Structure, and Downloader installation.

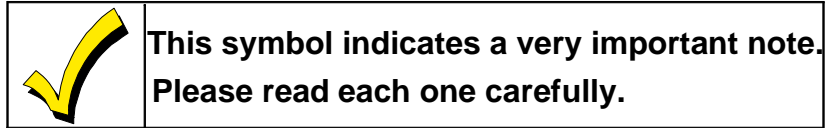
It also includes a Quick Start guide designed to get the experienced user up and running quickly.

Section 2 takes you through the Downloader Setup and covers those items that only need to be performed once, such as the modem setup.

Section 3 covers the daily activities performed with the Downloader. This section includes adding and modifying customer accounts and communicating with the control.

Appendix A, located at the back of this manual, provides a complete explanation of all programming fields, followed by an index for easy referencing.

Our goal when writing this manual was to make it as easy to understand as possible. Occasionally, we include an important note or technical tip to make your work flow more smoothly. Find these tips by looking for a boxed note with a checkmark indication.



Where applicable, the actual screens are shown to help you understand the procedure being explained.

Any information that could not be included in the printed manual will be available in the on-line manual *Release Notes*.

Any future updates may be acquired through ADEMCO, or downloaded from our ADEMCO Web Page on the World Wide Web.

The WEB address is:

<http://www.ademco.com>

Windows Basics

As with most Windows programs, the Downloader program uses keystrokes as an alternative (or addition) to the mouse. On many of the screens there is a button that has a dark border around it. This button is called the “default” button.



If you press ENTER on the keyboard, the default button's

action will be performed. For example, when you open the Downloader, the Customer icon is defaulted (dark border). If you press the ENTER key you will open the Customer Modify screen.

The following commands are also available:

KEY	ACTION
TAB	Moves to the next field on the screen.
ENTER	Performs default button.
SPACE BAR	Fills in check boxes.
ALT+DOWN ARROW	Opens selected drop down choices.
ESC	Performs cancel/close button.

DownLoader Menu Structure

Button bars and menu bars are available to make your selections easy. Selecting the desired option from the menu bar will display the appropriate screen. If there are sub-categories for this selection, they will appear on a tab bar located beneath the button bar.

Selections are made using either the mouse or keyboard. To make a selection, point at it with the mouse and click the left mouse button. Notice that as you move the mouse across the screen, help text appears at the bottom of the screen describing each field, as well as the programming field number.

A sample screen follows.

The screenshot shows a software window titled "Vista-50 000000-0001 John Doe - * EDIT * - (Partition)". The window has a menu bar with "File", "Communications", "View", "Search", "Features", "Window", and "Help". Below the menu bar is a tab bar with tabs for "Partition", "Dialer", "Device", "Globals", "Users", "Zones", "Schedule", "Relay", "Change", "History", and "Close". The main content area is titled "Default Partition Data" and contains a "# of partitions" dropdown set to "6" and a "Default Console Message" field containing "****DISARMED****" and "READY TO ARM". Below this is a "Partition Data" table with columns: PART, DESCRIPTOR, NAME, PRIMARY SUB ID, SECONDARY SUB ID, ALPHA1, and ALPHA2. The table contains 6 rows of data. At the bottom of the window is a "Current Partition Information" field with the value "93".

Annotations with arrows point to the following elements:

- Menu Bar
- Tab Bar
- Button Bar
- Context Sensitive Descriptors
- Program Field Number

PART	DESCRIPTOR	NAME	PRIMARY SUB ID	SECONDARY SUB ID	ALPHA1	ALPHA2
1			0001		****DISARMED**	READY TO ARM
2					****DISARMED**	READY TO ARM
3					****DISARMED**	READY TO ARM
4					****DISARMED**	READY TO ARM
5					****DISARMED**	READY TO ARM
6					****DISARMED**	READY TO ARM

Installation

Installation on a Single PC

1. Insert the disk labeled Compass Downloader disk 1 of 6 into your floppy drive, or insert the CD-ROM into your CD-ROM drive.
2. In Windows 95 or NT, from the Start Bar, click Run.
In Windows 3.X, select Run from the Program Manager or File menu.
3. Type **a:setup** (or **b:setup** if that is your 3.5 floppy drive). If you are using the CD-ROM, type in the letter of the CD-ROM drive (i.e., **d:\setup**) instead.
4. The setup program prompts you through the installation process. Follow the instructions on the screen.
5. The setup program defaults to the c:\Compass directory. If desired, you can change the location and directory name when prompted to do so.
6. Next, it is recommended that setup be allowed to create a backup directory. This backup is defaulted to c:\Compass\backup. If desired, you can change the location and directory name when prompted to do so.
7. When the Select Components screen displays, make sure all the boxes are checked.
8. Click FINISH to complete the installation.

Installation on a Network

When installing on a network, first, follow the steps for installing on a single PC, changing the default directory to one on the main network drive. Second, perform the following steps to install to each network workstation:

1. Insert the disk labeled Compass Downloader disk 1 of 6 into your floppy drive, or insert the CD-ROM into your CD-ROM drive.
2. In windows 95 or NT, from the Start Bar, click Run. In Windows 3.X, select Run from the File menu.
3. Type **a:setup** (or **b:setup** if that is your 3.5 floppy drive). If you are using the CD-ROM, type in the letter of the CD-ROM drive (i.e., **d:\setup**) instead.
4. The Setup program prompts you through the installation process. Follow the instructions on the screen.
5. The setup program defaults to the c:\Compass directory, when prompted, change the location and directory to the same one as the network drive.



For a network installation, you must direct the install program to the network drive where the original downloader files were installed.

6. Next, it is recommended that setup be allowed to create a backup directory. This backup is defaulted to c:\Compass\backup. If desired, you can change the location and directory name when prompted to do so.

7. When the Select Components screen displays, make sure that **only** the VBX, DLL and ICON boxes are checked.
8. Click FINISH to complete the installation.

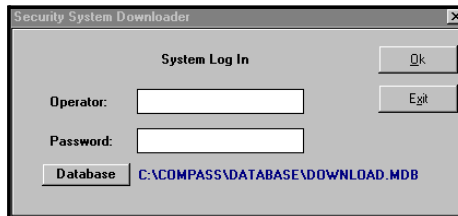


Log-On Procedure

After a successful installation, a Compass Downloader group is created including an icon titled “Download.”

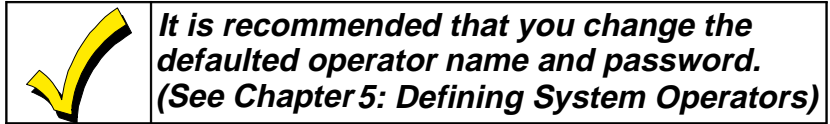


Double click on this icon to open the program. The log-on screen:



Enter an operator name and password. The default operator name and password is “*master*.” Anyone with a valid operator name and password can log on. The operator who is currently logged on is displayed in the upper right-hand side of the Customer Information screen.

Click on the DATABASE button and select the database desired. If a different database needs to be accessed, navigate to it and then select it.



Chapter 3

Quick Start

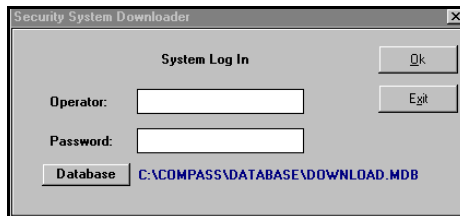
Quick start is intended for users who would like to get the downloader up and running quickly. To take full advantage of the many fine features of the Compass Downloader, it is recommended that you read the rest of this manual.

Setting Up the Downloader

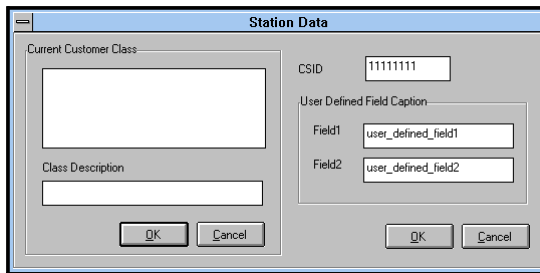
1. Click on the Compass Downloader icon from the Downloader program group.



2. Enter the operator name and password (*master* is the default for both) and select the OK button.

A screenshot of the "Security System Downloader" dialog box. The title bar reads "Security System Downloader". The main area is titled "System Log In". It contains two text input fields: "Operator:" and "Password:". To the right of these fields are two buttons: "Ok" and "Exit". At the bottom, there is a "Database" label followed by the path "C:\COMPASS\DATABASE\DOWNLOAD.MDB".

3. Select Station Data from the file menu. The following screen appears:

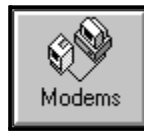


The 'Station Data' dialog box contains the following fields and controls:

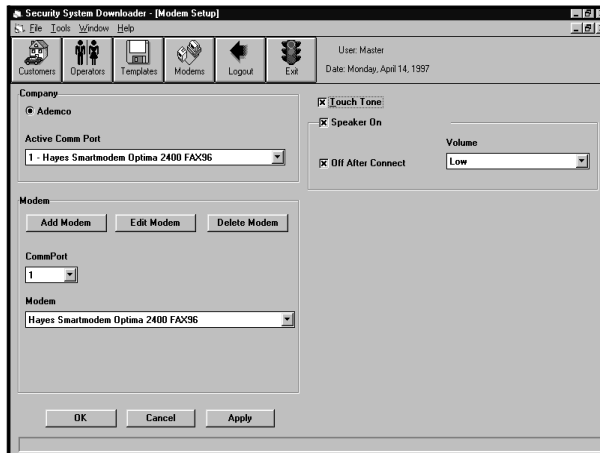
- Current Customer Class:** A large empty text area.
- Class Description:** A single-line text input field.
- CSID:** A text input field containing '11111111'.
- User Defined Field Caption:** A section containing two sub-fields:
 - Field1:** A text input field containing 'user_defined_field1'.
 - Field2:** A text input field containing 'user_defined_field2'.
- Buttons:** 'OK' and 'Cancel' buttons are located at the bottom of the dialog.

4. Enter your Central Station Identification (C.S.I.D.) number and select OK.

5. Click on the MODEMS button.



The following screen appears:



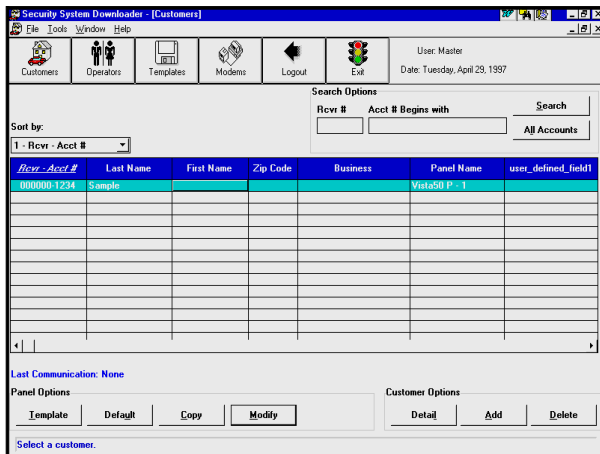
The 'Security System Downloader - (Modem Setup)' dialog box includes the following elements:

- Navigation Bar:** Buttons for 'Customers', 'Operators', 'Templates', 'Modems', 'Logout', and 'Exit'.
- System Info:** 'User: Master' and 'Date: Monday, April 14, 1997'.
- Company Section:**
 - Company:** A dropdown menu showing 'Ademco'.
 - Active Comm Port:** A dropdown menu showing '1 - Hayes Smartmodem Optima 2400 FAX36'.
- Modem Section:**
 - Buttons:** 'Add Modem', 'Edit Modem', and 'Delete Modem'.
 - CommPort:** A dropdown menu showing '1'.
 - Modem:** A dropdown menu showing 'Hayes Smartmodem Optima 2400 FAX36'.
- Options Section:**
 - Touch Tone**
 - Speaker On** (with a 'Volume' dropdown menu set to 'Low')
 - Off After Connect** (with a 'Low' dropdown menu)
- Buttons:** 'OK', 'Cancel', and 'Apply' buttons at the bottom.

6. In the modem section, select the port being assigned.
7. Select the type of modem being used from the modem pulldown menu.
8. Click APPLY.
9. Select the Active Comm. Port that the Downloader will be using.
10. Select Touch-Tone if using Touch-Tone service and select the modem speaker options.
11. Click OK.

Creating a New Account

1. Click on the CUSTOMER button.
2. Click on the ADD button in the Customer Information screen.



3. Enter the account information (i.e., name, address, etc.).
4. Click OK.
5. Click on the MODIFY button in the Customer Information screen.
6. Enter the account control panel information. For complete definitions of all the programming fields, refer to Appendix A.
7. Click on CLOSE and then select SAVE to save the programming. You will be returned to the Customer Information screen. Repeat these steps to continue adding customer accounts or go to the next section to download to the control panel.

Getting On-line With The Control Panel

For this procedure to work you must use a new or newly defaulted alarm control panel.

Control Panel Preparation

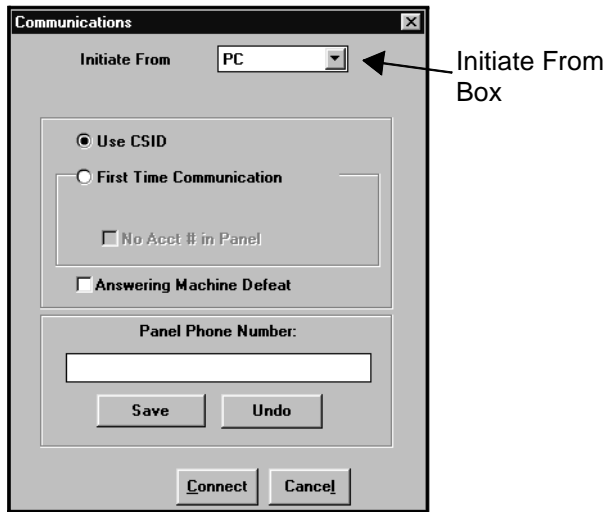
1. Program a Ring Count of any number higher than "0" (1-15) in the control panel.
2. Program a Callback Number to the PC modem into the control panel.
3. Connect the control panel to a phone line that is different than the PC modem's phone line.
4. Make sure the control panel is no longer in the program mode.



See the specific control panel installation instructions on how the above steps are performed.

Communicating with the Downloader

1. Click on the MODIFY button to access the programming fields for the selected control panel.
2. Select Panel Communications from the Communications pulldown menu.
3. Click on the CONNECT button. The following screen appears:



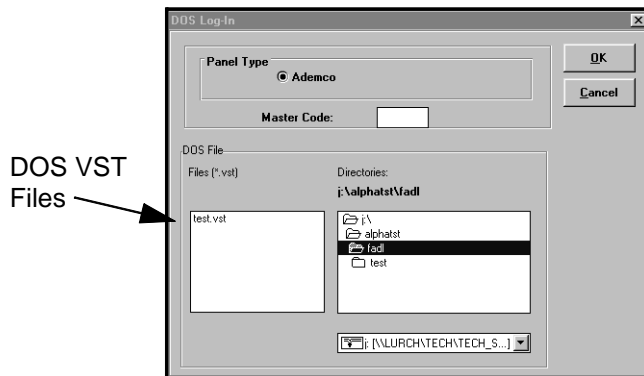
4. Select PC from the "Initiate From box".
5. Select First Communication.
6. Make sure "NO ACCT. # IN PANEL" is checked.
7. Enter the control panel phone number.
8. Click on the CONNECT button.

9. The PC will call the control panel. A series of SEND and RECEIVE arrows at the bottom of the screen will appear. The modem will disconnect and wait for the control panel to call back.
10. When the control panel calls back and gets on-line, select the action you wish to perform from the On-line Commands (Download, Upload, etc.).
11. When you are done communicating, click on the DISCONNECT button.

DOS V-Link Conversion

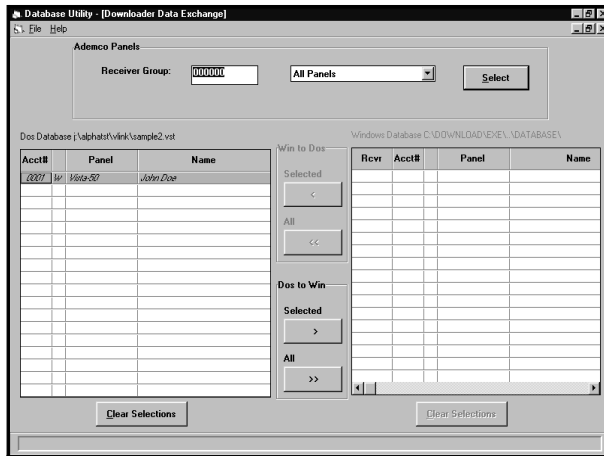
This section describes the steps needed to convert existing DOS V-Link accounts to Compass Downloader accounts.

1. Select Convert DOS V-Link Accounts from the Tools pull down menu. The following screen appears:



2. Enter the DOS Downloader Master Code.
3. Navigate to the directory where the V-Link accounts are located.

4. Highlight the appropriate DOS VST file to be converted. The following screen appears:



5. Enter the Receiver Group that the new accounts will be assigned to.
6. Select the account numbers of the DOS files to be converted and click on the SELECTED button to convert the file(s). If all the fields are to be converted, click on the ALL button and all the files will be converted. If only certain control panel types are to be converted, select those panel types from the pulldown menu and click on the SELECT button. Only accounts using those types of controls will appear.
7. The files have been converted when they appear on the right side of the screen. When all selected files are converted, select CLOSE from the File pulldown menu.

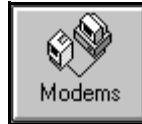
If you want to convert additional DOS accounts, repeat steps 1-7.

Chapter 4

Communications Setup

Downloader Communications Setup

To set up downloader communications, click on the MODEMS button.



The following screen appears:



9. In the modem section, select the port being assigned.
10. Select the type of modem being used from the modem pulldown menu.
11. Click APPLY. To setup an additional modem on another port, repeat steps 1-4.
12. Select Touch-Tone if using Touch-Tone service and select the modem speaker options.
13. Click OK.

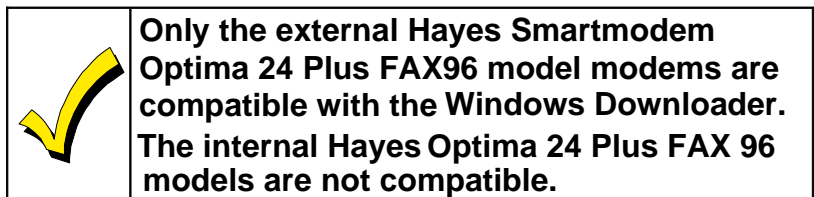
Modem Setup

The following modems are supported and need no configuration:

BizComp Intellimodem 1200 w/volume
BizComp Intellimodem 2400
Hayes Optima 336
Hayes Smartmodem 2400
Hayes Smartmodem Optima 2400 Fax96

The following modems are supported and need to be configured (DIP Switches):

Hayes Smartmodem 1200 External Modem
Hayes Smartmodem 1200B Internal Modem
(Rev.1.2 or higher)

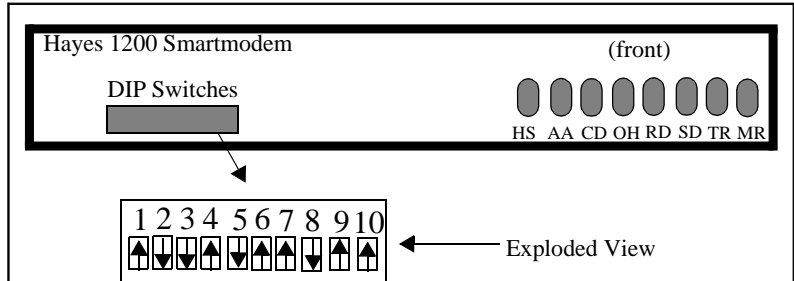


Configuration

Each modem type must be configured differently for communications to be successful. The following defines the requirements for each model.

Hayes Smartmodem 1200 External Modem

Configure the DIP switches behind the modem's front panel in the following manner:



Smartmodem 1200 External Modem

Hayes Smartmodem 1200(B) Internal Modem

DIP switches:

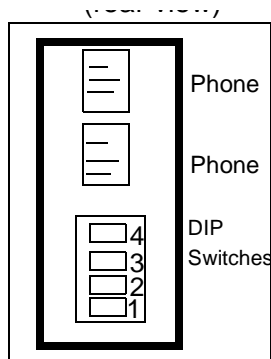
SW4 - OFF

SW3 - ON

SW2 - OFF

SW1 - ON= Comport #2

OFF= Comport #3



Smartmodem 1200 (B) Internal Modem

Add Modems

This button is for future use and will be used to add modems as they are approved by ADEMCO. We strongly recommend using the modems documented in this chapter, as they are the only modems currently supported. To add a new modem, proceed as follows:

1. Click the ADD button. The following screen appears:



2. Enter modem commands as directed by ADEMCO.
3. Click OK.

Edit Modem

This button is used to edit the modem commands only for those modems that are added to the downloader. Modems settings that were shipped with the downloader are not editable. To edit a modem's settings:

1. Select the modem from the modem pulldown menu.
2. Click on the EDIT button.

3. Enter modem commands.
4. Click on OK to save the new commands or CANCEL to exit without saving.

Delete Modem

This button is used to delete modems that have been entered in by an operator. Modems that were shipped with the downloader cannot be deleted. To delete an operator installed modem:

1. Select the modem from the modem pulldown menu.
2. Click on the DELETE button.
3. Click OK to confirm the deletion.

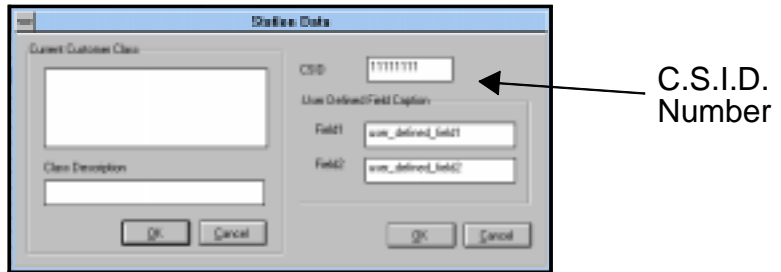
Central Station I.D.

The Central Station Identification number is used as a means of identifying the alarm installing company to the control panel. This number is transmitted by the computer and is verified by the control panel when attempting to get on-line for downloading.

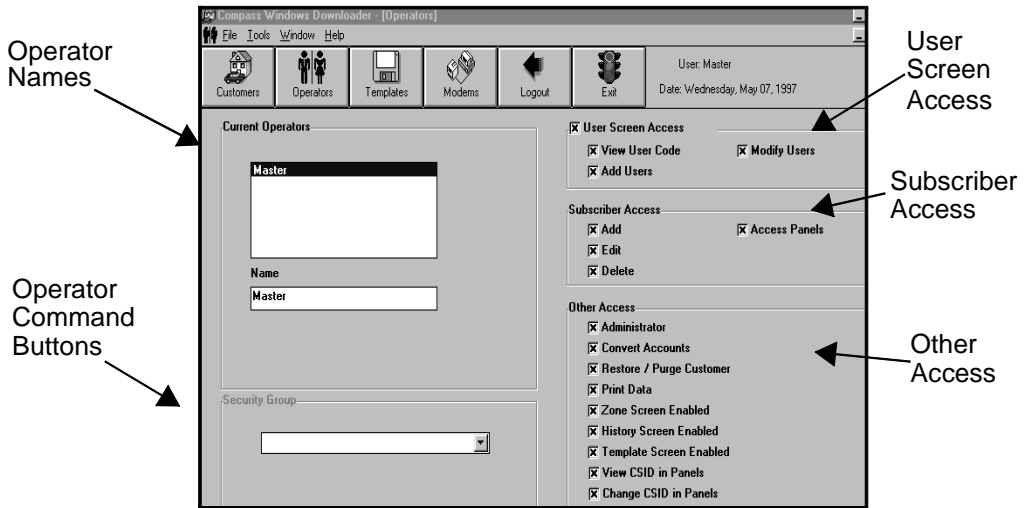


The C.S.I.D. number is assigned by the alarm installing company, not by the central station.

To enter your Central Station I.D. (C.S.I.D.), select File from the menu bar at the top of the Customer screen. In the pulldown menu, select Station Data. Then locate the C.S.I.D. field. Enter your C.S.I.D. number. Select OK to save and exit, or CANCEL to exit without saving.



An operator (when given the authority) can view or change the C.S.I.D. in the Dialer screen when modifying an alarm control panel.



This screen defines the security level of all operators of the system. You will not be allowed to exit the screen unless at least one operator is defined as an “Administrator.”

Adding New Operators

To add new operators:

1. Click on the ADD button on the bottom of the Operators Screen.



2. The screen will change slightly allowing you to type in an operator’s name and password. The password must be typed twice to confirm it.
3. Select the properties for that operator (steps are continued after the properties definitions).

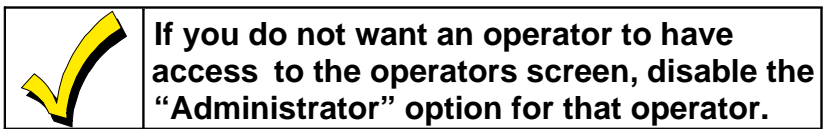
The following describes access selections for system operators:

User Screen Access Definitions

- | | |
|---------------------|---|
| User Screen Access: | Allows operator to view control panel User screen when modifying control panel programming. |
| View user code: | Allows operator to view control panel user codes. |
| Add Users: | Allows operator to add control panel user codes. |
| Modify Users: | Allows operator to edit or delete control panel user codes. |

Subscriber Access Definitions

- | | |
|-----------------|---|
| Add: | Allows operator to add new customers to database. |
| Edit: | Allows operator to edit existing customer information. |
| Delete: | Allows operator to delete customers from database. |
| Access Control: | Allows operator to access and change alarm control information. |



Other Access Definitions

- Administrator:** Allows the operator full access to the Operator screen. Without this option, the operator cannot view the Operator or Station data screens.
- Convert Accounts:** Allows operator access to the Convert DOS Accounts screen.
- Restore/Purge Customers:** Allows operator to restore or completely purge customer accounts.
- Print Data:** Allows operator to print all alarm control information.
- Zone Screen Enabled:** Allows operator access to the Zone Information screen for the control.
- History Screen Enabled:** Allows operator access to the History Screen for the control.
- Template Screen Enabled:** Allows operator access to the Create Templates screen.
- View C.S.I.D. in Panels:** Allows operator to view the Central Station Identification Number.
- Change C.S.I.D. in Panels:** Allows operator to change the Central Station Identification Number.

4. Click on the OK button to save the addition.
5. To continue adding operators repeat steps 1-4. When you have finished, click on CLOSE.

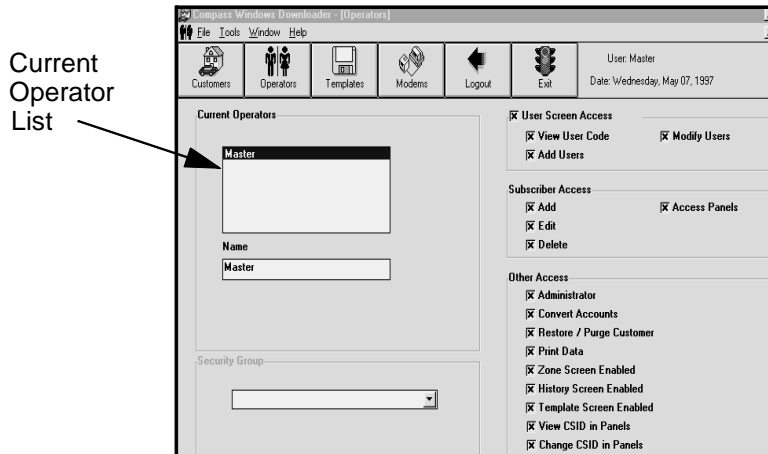
Changing Operator Names

If you want to change an operator's name, highlight it in the Name box and type in the new name, then click the UPDATE button.

Changing Operator Passwords

Only an operator with administrator level can change an operator's password. If an operator forgets or wants to change their password:

1. Select the operator's name from the Current Operator List.
2. Click on the CHANGE PASSWORD button.
3. Assign the new password and verify it by entering it again.
4. Click on the OK button.



Updating Operator Information

At anytime, you can update or change an operator's access status by doing the following:

1. Select the operator from the Current Operator list.
2. Modify the characteristics for the operator.
3. Click on UPDATE.

Deleting Operators

To delete an operator, click on the operator's name from the Current Operators box and click on the DELETE button.

Logging out

To log out, simply click on the Log-out icon. This will bring you back to the log-in screen.



To exit the program completely, click on the EXIT button.

Chapter 6

Customer Information

The first step in defining account information is to set up your customer database. This is performed on the Customer Information screen.

Sort By Box

Customer Accounts Grid

Search Options Box

Customer Options Customer Box

Adding Customer Accounts

To add a new customer account:


1. Log on to the system.
2. Click on the ADD button from the *Customer Options* box.

3. The screen displayed allows you to add customer information.

The screenshot shows a 'Customer Detail' dialog box with the following fields:

- Subscriber Data:**
 - Receiver:
 - Account:
 - Last Name:
 - First Name:
 - Business:
 - Voice Phone:
 - Fax:
 - Address 1:
 - Address 2:
 - City:
 - State:
 - Zip code:
 - Zip Ext:
 - user_defined_field1:
 - user_defined_field2:
- Panel Data:**
 - Panel:
 - Revision:
 - Class:
 - Panel Phone Number:
- Notes:**
- Buttons:** OK, Cancel

4. Tab through the screen to move from field to field. You must fill in the Receiver Group number, a 3 or 4 digit Subscriber Account Number, Panel Type, and Revision Number.



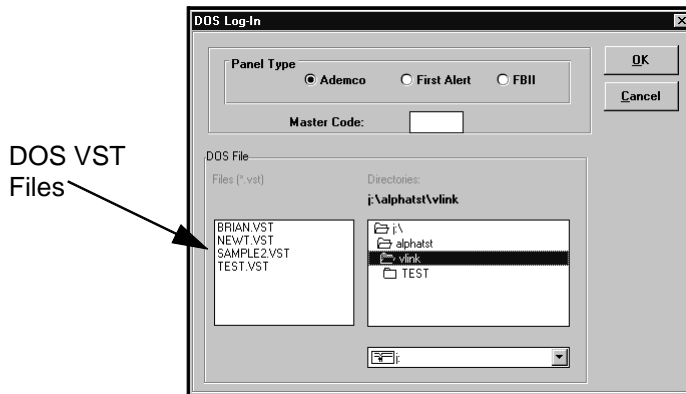
The revision determines which programming fields the downloader displays. If you are uncertain of the revision, select the highest available, but keep in mind that the control panel may not have all the listed fields.

5. Click on the OK button to save the new account. The CANCEL button will exit the screen without saving the information.

Converting Accounts from the V-Link Downloader

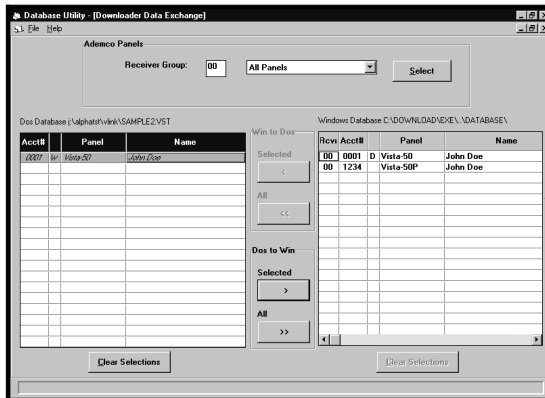
This section describes the steps needed to convert existing DOS VLink accounts to Compass Downloader accounts.

1. Start the downloader by double clicking on the Downloader Icon in the Downloader group.
2. Logon to the Downloader.
3. Select Convert DOS VLink Accounts from the Tools pull down menu. The following screen appears:



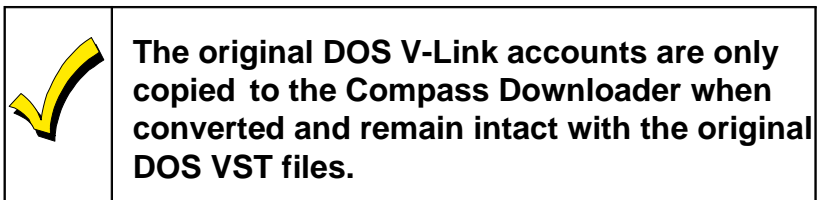
4. Select the Panel Type and enter the DOS Downloader Master Code.
5. Navigate to the directory where the VLink accounts are located.
6. Select the appropriate DOS VST file to be converted. The following screen appears:

DOS VLink Files



Windows Downloader Files

7. Highlight the DOS files to be converted and click on the SELECT button to convert the file. If all the files are to be converted, click on the ALL button and all the files will be converted. If only certain control panel types are to be converted, select those panel types from the pulldown menu. Only those type of controls appears.
8. The converted files will be listed on the right-hand side of the screen above.
9. When all selected files are converted select Close from the File pulldown menu.



Modifying Customer Accounts

At any time, you can change customer account information as follows:

1. Click on the customer you would like to change from the Customer Accounts box.
2. Then click on the **DETAIL** button in the Customer Option box. The Customer Detail screen appears with a button at the bottom marked **EDIT**.
3. Click on the **EDIT** button to access the customer's information.
4. Make the necessary changes.
5. Click on the **OK** button, or **CANCEL** to exit without saving the changes.

Deleting Customer Accounts

Deleting a customer is a two step process. To delete a customer:

1. Click on the customer's name from the Customer Account box.
2. Click on the **DELETE** button. A confirmation box will appear.
3. Select either **OK** to delete or **CANCEL** to keep it.

See Restoring/Purging Customers below to complete the deletion process.



An account must be purged before that account number and receiver number can be used again.

Restoring/Purging Customer Accounts

This is step two in the deletion process. When you delete a customer as described above, the information is not completely lost. You must then "Purge" the account to completely delete it. Whether you want to restore or purge

5. Business
6. Panel Name
7. User_Defined_Field 1
8. User_Defined_Field 2

To select the sort method, you can either click on the selection from the pulldown box or type the corresponding number. As a reminder, the field that you selected to sort by is *italicized* on the screen.

Searching for Customer Accounts

The Search feature works with the Sort feature. When a sort method is chosen (Acct.Num, Last Name, etc.), that method also available in the search box.

1. Enter the Receiver Number or the beginning of the sort method chosen.
2. Then click on the SEARCH button. The result of your search appears.
3. To display all the customer accounts again, click on the ALL ACCOUNTS button.

User Defined Fields

There are two fields on the Customer Information screen that you can define in any way and can be used to help organize your accounts (i.e., residential, commercial, etc.).

1. Select Station Data from the File pulldown menu (at the top of the Customer Information screen). The following screen appears:

Station Data

Current Customer Class

Class Description

CSID: 11111111

User Defined Field Caption

Field1: user_defined_field1

Field2: user_defined_field2

User Defined Fields

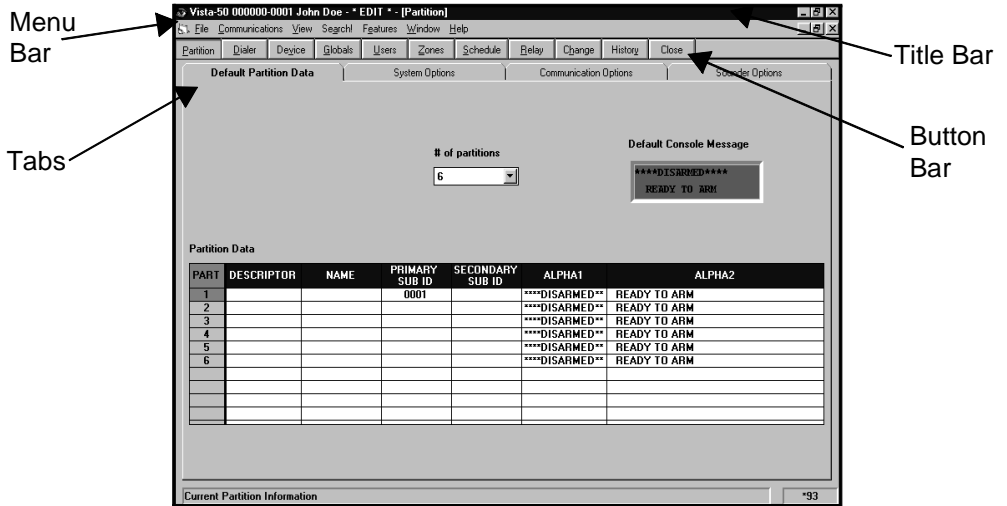
OK Cancel

2. Type the field name you wish to use into the two boxes marked User_Defined_Fields.
3. Click OK.

When you rename these fields, the new name will also appear in the Sort By box. You have now created a custom sort feature.



The following screen is displayed:



At the top of the screen is the title bar. It contains the control panel type and the account number of the customer you selected. The status of the data you are looking at, such as current or uploaded, is also displayed. Below this is the menu bar. The options in the menu bar are not control panel specific, they are downloader operations. These options are as follows:

File:

Save: Allows an operator to save the alarm control settings.

Printer Setup: Allows an operator to select and setup the printer.

Diagnostic Print: (future use)

Print Programming Form: Allows an operator to print a programming form with the fields filled in to match the downloader settings.

Exit: Allows an operator to exit the alarm control programming screen.

Communications:

Panel Communications: Allows an operator to set up the initial modem commands and communicate with the alarm control (see Communications, Chapter 4).

View:

The following view modes give the operator the ability to see three different versions of a control's programming. This allows the user to compare the values saved in the downloader to values uploaded from the control, or a current edit not yet saved. The screen being viewed is indicated in the upper right corner of the Title Bar.

Current Edit: Allows an operator to view the changes just made (not saved yet) to the control programming.

Upload: Allows an operator to view the uploaded alarm control data.

Saved: Allows an operator to view the saved (in the downloader) data.

DOS: Allows an operator to view the original DOS downloader programming information on a

converted account.

Defaults: Allows an operator to view the programming defaults for a control panel.

Search:

Allows an operator to search for a specific programming field number. To do this, proceed as follows:

1. Enter the programming field number that you are looking for.
2. Click on the FIND FIRST button.
3. If you want to go to the field in the programming screens, click on the GO TO button.

Features:

This menu displays the same options as those on the Button Bar, as well as the available hotkeys.

Window:

Presents normal windows features such as cascading and arrange icons, and displays forms currently open.

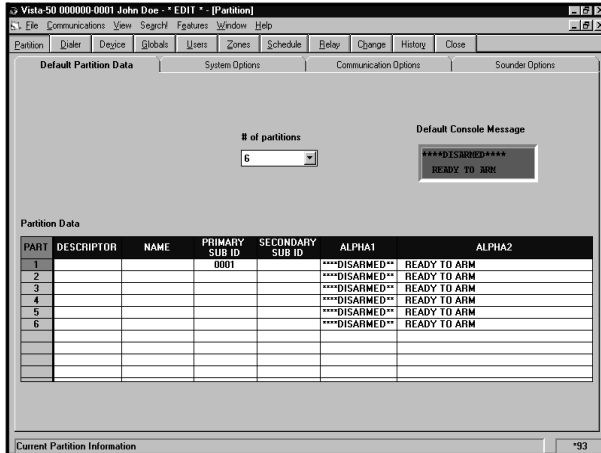
Help:

Pulls down the Help menu. Select ABOUT to view the release date of your Downloader.

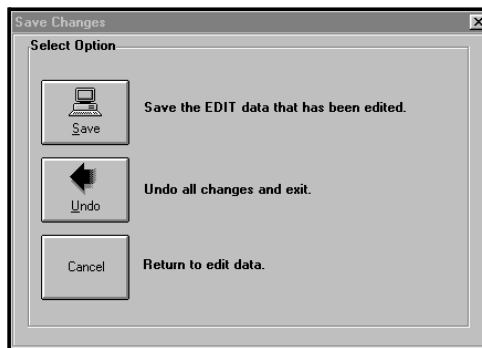
Programming an Alarm Control

1. Either double-click on the account in the Customer screen or select the account using the mouse, and then click on the EDIT button.

- The following screen appears. This screen will vary according to the control panel selected.

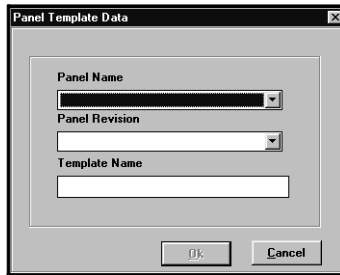


- Select from the button bar which section (Partition, Dialer, Zones) to program.
- Enter the control panel programming information. For complete definitions of all the programming fields, see Appendix A.
- When done programming, Select the CLOSE button. This screen appears:



- Select the SAVE button to save the programming

Revision, and a name for this template.

A screenshot of a dialog box titled "Panel Template Data". The dialog box has a standard Windows-style title bar with a close button (X) in the top right corner. Inside the dialog, there are three input fields: "Panel Name" (a dropdown menu), "Panel Revision" (a dropdown menu), and "Template Name" (a text input field). At the bottom of the dialog, there are two buttons: "OK" and "Cancel".

2. Click on OK to save, or CANCEL to exit without saving.
3. Then click on the MODIFY button to program the alarm control panel.
4. When you are done programming the control panel, select CLOSE and then SAVE to save the information.

Modifying Templates

To modify an existing template:

1. Click on TEMPLATE in the Customer Information screen.
2. Select the template from the Templates list.
3. Click on the MODIFY button. You will be brought into the selected alarm control to program the template information.
4. When you are done programming the control panel, select CLOSE and then SAVE to save the information.

Deleting Templates

To delete a template:

1. Click on **TEMPLATE** in the Customer Information screen.
2. Highlight the Template on the list.
3. Click on the **DELETE** button.
4. Click on **OK** to delete, or **CANCEL** to exit without deleting.

Converting Customer Data to Templates

To use another customer's account data as a template:

1. Follow steps 1 and 2 from "Creating New Templates" above.
2. Then select the **CUSTOMER DATA** button. A form will appear with a list of current customers using that type of control.
3. Select the customer to use as a template and click on **OK**.

Using A Template To Create A New Account

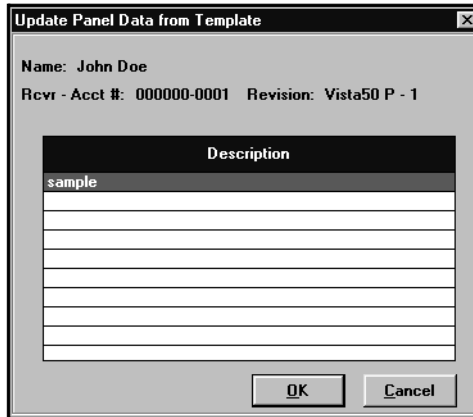
Templates are used to speed the process of programming a control panel. To use a template to program a control:

1. Create a new account or, highlight the account on Customer Information screen that the template is to be applied to.

2. Click on the TEMPLATE button.



The following screen appears:



3. Highlight the template that will be applied to the account. Click OK.
4. Confirm the template selection by clicking OK. The control panel will now be programmed to match the template.

Copying an Account

The Copy command can be used in place of Templates for quickly copying programming information from one control to another. To Copy an account:

1. Click on the COPY button. The following screen appears:

Select source panel for copy procedure...

Enter the receiver and account numbers of customer's panel to be used by the target panel. Or search for an account by clicking Browse.

Panel Name-Revision: Vista50 P - 1

Receiver Number **Account Number**

Target Panel **Create New Panel**

Receiver Number **Account Number**

000000 0001

2. Enter the receiver and account number of the control panel to be copied from or click on the BROWSE button to locate the account.
3. Enter the receiver and account number of the panel to be copied to or check the Create New Panel box.
4. Click OK. The new account will now be copied from the source account.



An account can only be copied to another account using the same control panel type and revision.

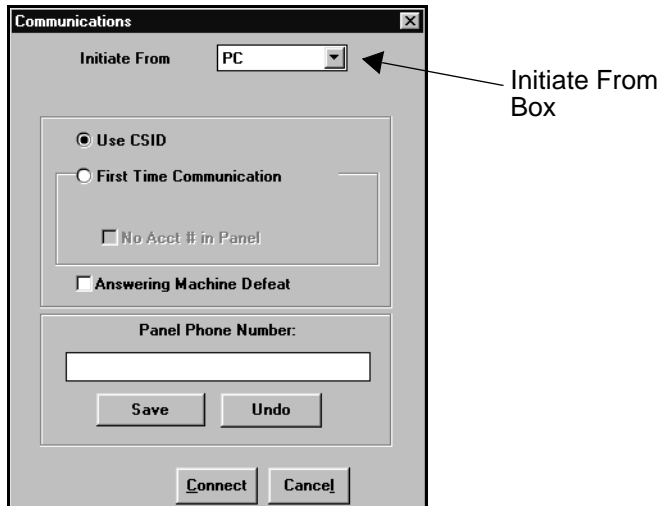
Chapter 8

Communicating With The Control

Getting On-line

Control Communications

1. Click on the MODIFY button to access the programming fields for the selected control panel.
2. Select Panel Communications from the Communications pulldown menu.
3. Click on the CONNECT button. The following screen appears:



4. In the Connect From box, select the origin of the remote call (PC, Control) or, if your control is

directly connected to your computer's serial port, select Direct. To determine whether you should select the First Communication and Answering Machine Defeat options, see the descriptions of both to follow.

5. Select First Communication.
6. Make sure NO ACCT. # IN PANEL is checked.
7. Enter the control phone number and select the CONNECT button. To save the phone number, select SAVE under the control panel phone number. This number will now be the default number used to call this particular control.

If you need to change the number, enter the new number and select SAVE again. The old number will be overwritten. If you want to temporarily use another number, enter it, and after the session, select UNDO. You will be asked if you want to restore the prior number. Select OK.

8. Click on the CONNECT button.
9. The PC will call the control panel. A series of SEND and RECEIVE arrows at the bottom of the screen will be displayed. The modem will disconnect and wait for the control to call back.

If you need to modify the control panel programming while on-line, click on the MODIFY button.



The control panel programming screen appears. See *Chapter 7: Control Panel Information* for programming information.

First Communication

To get on-line with an unprogrammed control as a First Communication:

1. Select First Time Communication in the downloader.
2. Default the control.
3. The control must have a Ring Detect and Download Callback Number programmed. If callback is disabled at the control you must also enable Download Without Callback in the downloader.

To get on-line with a control that has already been programmed:

1. Leave First Time Communication unselected in the downloader.
2. The control must have a Ring Detect and Download Callback Number programmed. If callback is disabled at the control you must also enable Download Without Callback in the downloader.
3. The subscriber's account number and C.S.I.D. have to be programmed into the control and have to match what is in the downloader. If either of these fields do not match, the control will not get on-line with the downloader.

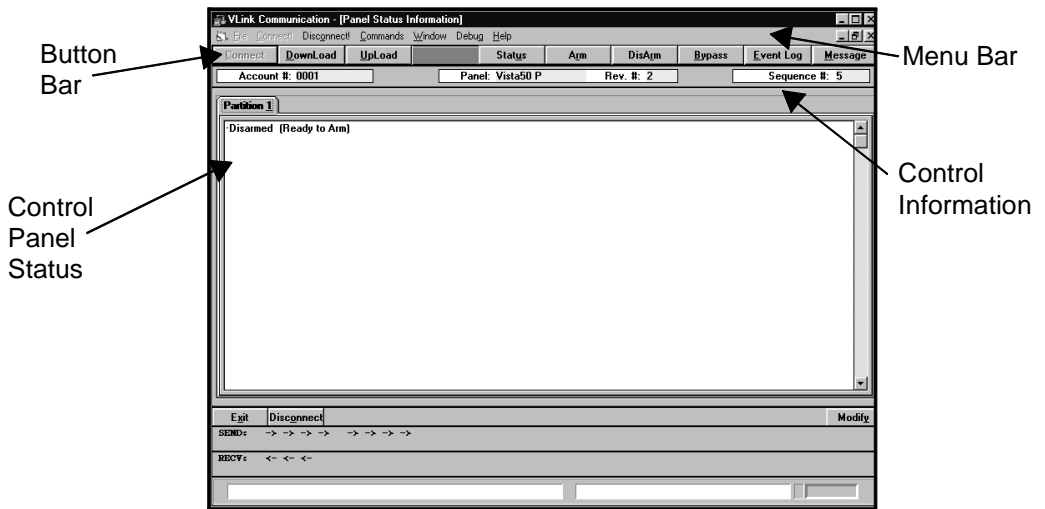
Answering Machine Defeat

The downloader allows remote operation to be initiated to sites that have an answering machine. The modem

speaker must be enabled in the downloader Communications Screen so you can hear the phone at the site ringing. Also, Answering Machine Defeat must be enabled in the downloader Dialer screen for the control you are communicating with and the control must be programmed for “15” rings.

1. Select Answering Machine Defeat on the downloader Communications Screen.
2. Initiate a call from the PC. The PC will display “Answering Machine Mode.” Listen for the phone to ring at the site.
3. After the first ring, press the ESCAPE key to disconnect the call. The PC will automatically hang up, wait 3 seconds, and re-dial the number. The message “hanging up and calling again” is displayed.
4. The control should answer the second call on the first ring.
5. The control will initiate a callback to your PC.

After the initial exchange and verification of the C.S.I.D. number, a Control Status Information screen is displayed. This screen displays the current status of the alarm control. Whenever you make a request or send a command, a Panel Status box is displayed. The Status box displays the status of communications between the control and the downloader. At the bottom of the Status Box is a status bar that shows the progress of the information transfer:



If you are using a Vista-100 control, a special option will be listed under the File pulldown menu called “View Logs.” This option allows you to upload the following information:

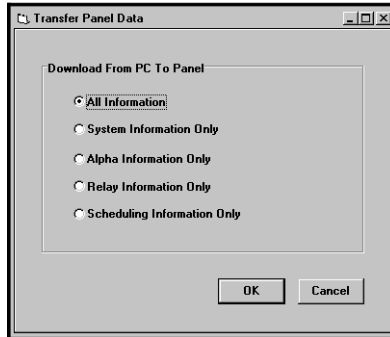
- **Event logs:** Provides the same function as the Event Log button.
- **ECP Reports:** Lists all the addressable devices connected to the system (i.e., keypads, voice module, etc.).
- **Fire Test Reports:** Uploads the results of the Fire Walk Tests that have been logged into the control panel.
- **Unsolicited Alarms:** Lists all alarms that have occurred while on-line with the control panel.

When you are on-line with a control, the following commands are available:

On-Line Commands

Download

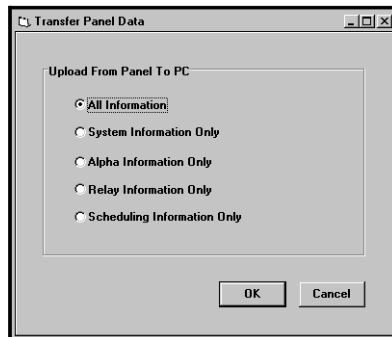
To download programming information to the alarm control, click on the DOWNLOAD button. The following screen will appear:



Select the information you want to download from the available options and click OK.

Upload

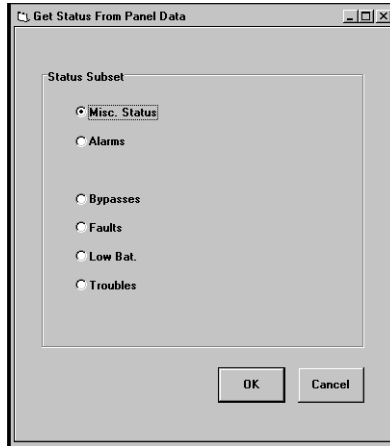
To upload programming information from the control to the downloader, select the UPLOAD button. The following screen will appear:



Select the information you want to upload from the available options and click OK.

Status

To determine the status of the control that is on-line with the downloader, select the STATUS button. The following screen will appear:



Select which status the downloader should inquire about.

Arm

To arm the control from the downloader, select the ARM button. The following screen will appear:

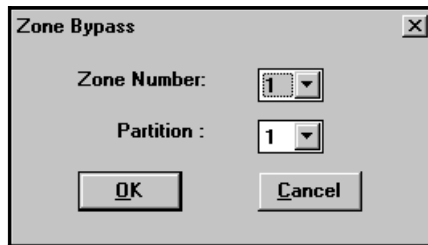


Select OK to confirm that you want to arm the alarm control. If the control cannot be armed, the downloader will display a warning stating that the control cannot be armed and a status screen will show the faulted zones.



Bypass

To bypass faulted zones via the downloader, select the BYPASS button. The following screen will appear:



Select the zone number to be bypassed and the partition to which it belongs (if applicable). Then click on OK.

DisArm

To disarm an alarm control, select the DISARM Button. The following screen will appear:



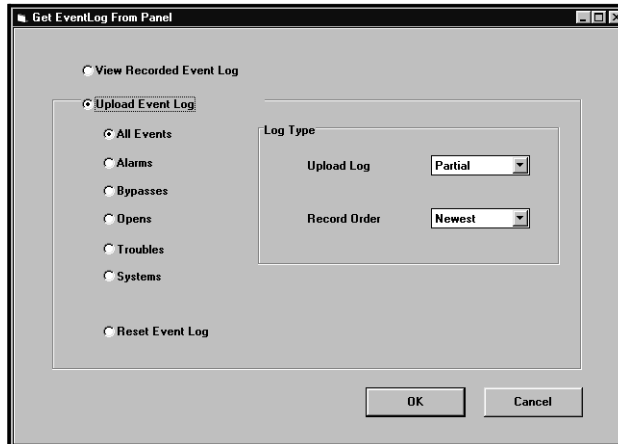
Select OK to confirm disarming.

Event Log

When using the Vista 100

To upload the control panel's event log:

1. Click on the EVENT LOG button. The following screen will appear:

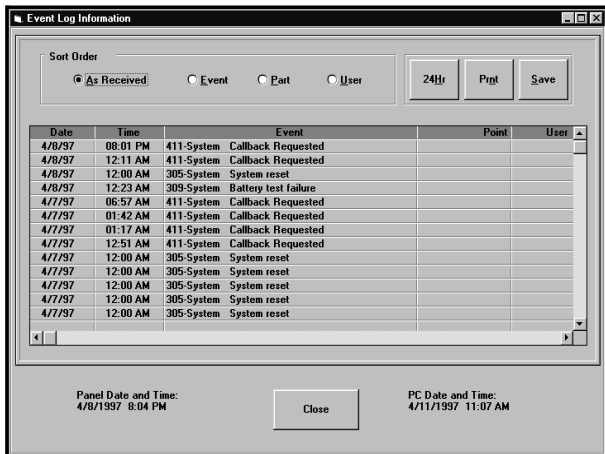


2. Select the type of events to upload.
3. From the Upload Log pulldown menu select partial or full. If you select Partial, only those events since the last event log reset will be uploaded. If you select Full, all events will be uploaded.

- Select how the records are to be displayed, either from oldest or newest from the Record Order box.
- Click OK. The following screen appears:

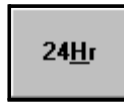


- When the Event Log details have been uploaded the following screen appears:



- To change the sort order, select an option from the Sort Order options box.

8. To view the events in a 24 hour format, click on the 24HR button.



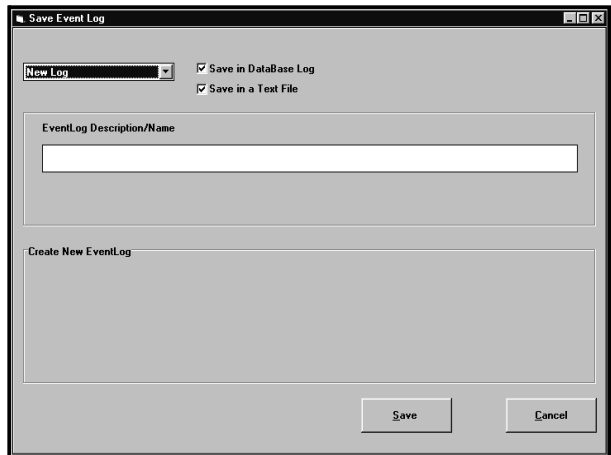
9. To print the Event Log, click on PRINT.



Saving the Event Log

With the Event Log screen displayed:

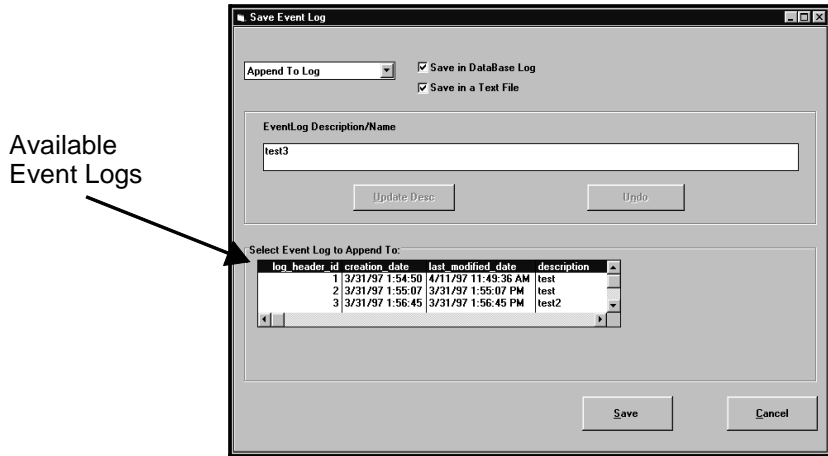
1. Click on SAVE. The following screen appears:



2. Select the Save options. If you want to save the log in the downloader only, select Save In Database Log and de-select Save In Text File.
3. If this is a new Event Log, select New Event

Log. If you would like to append an old event log with this new information, select Append To Log.

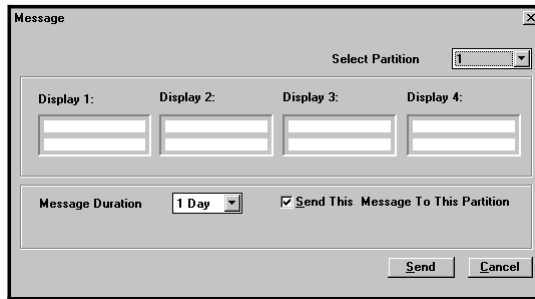
4. When Append To Log is selected, the available event logs are displayed.



5. Highlight the event log to be appended.
6. Click on SAVE.
7. If you chose to save the Event Log in a text file, enter a name and saving location in the next screen.

Message

To display a message on the alarm control keypads, select the MESSAGE button. The following screen will appear:

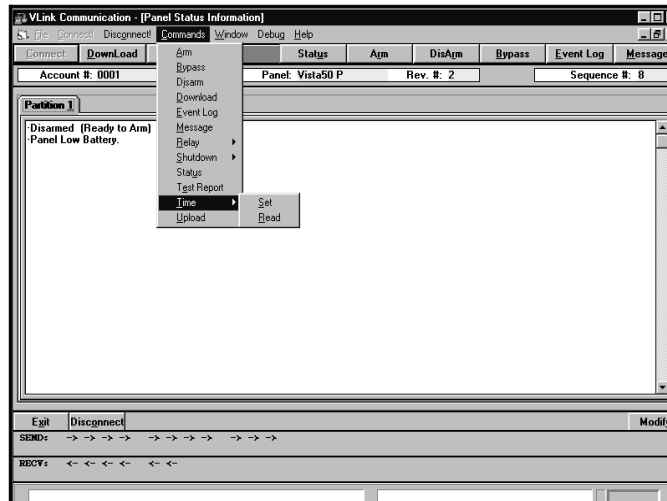


The screen will display an area for four different keypad messages. Type in up to four standard messages (one in each display window). Select the message that you want displayed at the system's keypads. If this is a multiple partition system, but the message is only supposed to be displayed on a particular partition, select Send This Message To This Partition. Select the amount of time the message is to be displayed from the Message Duration pulldown menu. Then click on SEND to download the information.

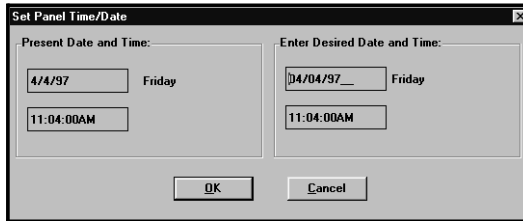
Setting the Time

To set the time in the alarm control panel:

1. From the Command pulldown menu, select TIME-SET.



The following screen appears:

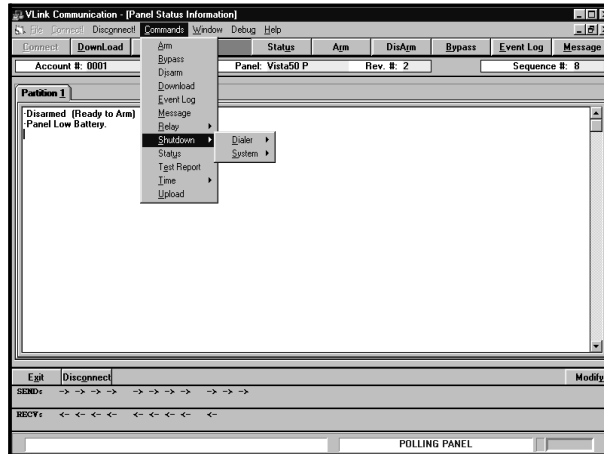


2. The control will be set to match the PC or you can change the time to whatever you wish.

Shutdown

To shutdown a control panel:

1. Select Shutdown from the Command pulldown menu:



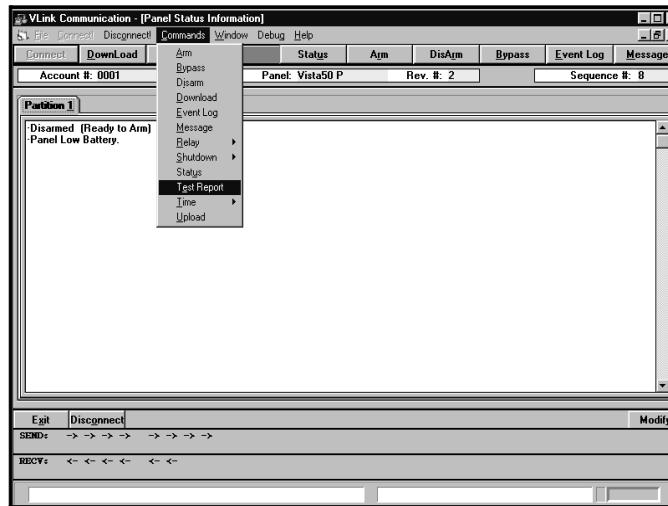
2. Select either Dialer or System. Dialer shuts down only the dialer portion of the system. System shuts down the entire alarm system.

3. Choose ON or OFF for the selected system.
4. Confirm your selection.

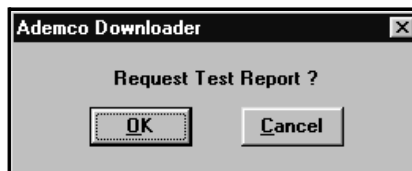
Test Report

If you would like the alarm control panel to send a Test Report immediately after the downloader session:

1. Select Test Report from the Command pulldown menu.



The following screen appears:



2. Select OK. The following screen appears to confirm the command:



Index

4100sm 1-1
4100sm Serial Module 1-1

A

Access Control 5-3
Add 5-3
Add Modems 4-4
Add Users 5-3
Adding Customer Accounts 6-1
Adding New Operators 5-2
Administrator 5-2, 5-4
Answering Machine Defeat 8-3, 8-4
Answering Machine Mode 8-4
Appendix A 1-3
Arm 8-6

B

Bizcomp Intellimodem 1200 W/volume
4-2
Bizcomp Intellimodem 2400 4-2
Button Bars 1-4
Bypass 8-7

C

C.s.i.d. Number 4-5
Central Station I.d. 4-5
Changing Operator Names 5-5
Changing Operator Passwords 5-5
Communications 7-3
 Features 7-4
 Modem Setup 4-5
 Search! 7-4
 Window 7-4
Communications 4-1

Control Communications 8-1
Convert Accounts 5-4
Convert Dos Vlink Accounts 6-3
Converting Accounts From The V-link
 Downloader 6-3
Customer Options Box 6-1

D

Default Operator And Password 2-9
Default Operator Name 2-9
Delete 4-5, 5-3
Deleting Customer Accounts 6-5
Deleting Operators 5-6
Disarm 8-8
Dos Vlink 6-3
Download 8-5
Downloader Communications Setup
4-1
Downloader Menu Structure 1-4

E

Edit 5-3
Edit Modem 4-4
Event Log 8-8

F

First Communication 8-3

G

Getting Online 8-1

H

Hayes Optima 2400 Fax96 4-2
Hayes Optima 336 4-2
Hayes Smartmodem 1200 External
Modem 4-2
Hayes Smartmodem 1200b Internal
Modem 4-2
Hayes Smartmodem Optima 2400 4-2
Help 7-4
History Screen Enabled 5-4

I

Installation On A Network 2-8
Installation On A Single Pc 2-7

L

Log 2-9
Logging Out 5-6
Log-on 2-9
Log-on Procedure 2-9

M

Menu Bars 1-4
Message 8-11
Modem Setup 4-2
Modify Users 5-3
Modifying Customer Accounts 6-4

O

On-line Commands 8-4
Operator

Adding New Operators 5-2
Defining Operators 5-1
Operators 5-1
Other Access Definitions 5-4

P

Print Data 5-4

R

Release Notes 1-3
Restore/purge Customers 5-4
Restoring/purging Customer Accounts
6-5

S

Saving The Event Log 8-10
Searching For Customer Accounts 6-7
Setting The Time 8-12
Shutdown 8-13
Sorting Customer Data 6-7
Status 8-6
Subscriber Access Definitions 5-3
System Requirements 1-2

T

Template Screen Enabled 5-4
Templates 6-8
Test Report 8-14

U

Updates 1-3
Updating Operator Information 5-6

Upload 8-6
User Defined Fields 6-7
User Screen Access 5-3
User Screen Access Definitions 5-3

V

View User Code 5-3

W

Web Address 1-3
World Wide Web Address ,1-3

Z

Zone Screen Enabled 5-4

Appendix A

Appendix A is an explanation of all the programming fields in the ADEMCO Group Compass Downloader.

The fields have been listed in alphabetical order under the particular button they fall under. For example, if you want to find a definition for the “Enable Low Battery Report” field that is under the Globals button, first go to the Globals Button section. Then go through the listing until you get to the “Enable Low Battery Report” field’s explanation.

To aid you further, screen shots of the buttons (see example below) have been used to show the start of each section and each section starts at the top of a new page.





The following view modes give the operator the ability to see different versions of a control's programming. This allows the operator to compare the values saved in the downloader to values uploaded from the control, or a current edit not yet saved.

Base Values

- Saved:** This mode displays the data that has just been changed and saved.
- Upload:** This mode displays the uploaded alarm control data.
- DOS:** This mode displays the DOS downloader programming information on a converted account.
- Default:** This mode displays the programming defaults for a control panel.

Compare Values

- Screen:** This mode displays what has just been changed in the modify screens, but not yet saved.
- Saved:** This mode displays the data that has just been changed and saved.

Uploaded: This mode displays what has just been uploaded from the control.



The REFRESH button must be clicked whenever a compare option is changed.



Device

Device Addr

A device address is used for devices connected to the system's keypad terminals. The address you physically set in a device must match its programmed address. No entry required.

Device Type

Click in this field to access the pulldown menu to choose the type of device that is used on this address.

Value (Parameter 1- Master Partition or House ID)

Select the partition that the device is assigned to if a console was selected or a house ID if an RF receiver was selected.

Value (Parameter 2- Sounder Options)

Select the sounder options for the selected console.



Answering Machine Defeat

Enable this field to defeat an answering machine on site. When in the answering machine mode, the caller should let the phone ring once, then hit escape, then the control will call back immediately. The control, hearing one ring followed by nothing, will not answer the first call but will ready itself to pick up on the first ring of the next incoming call received within 30 seconds.

Auxiliary Output Enable

Select an option from the pulldown menu if:

- ground start output is required.
- the auxiliary output will be used to produce an open/close trigger.
- the auxiliary output will be used to produce keypad-like sounding at an auxiliary sounder.
- a two-way audio module is being used.

Call Waiting Defeat

Enable this field for the control to disable the telephone company's Call Waiting feature when dialing. Do not enable unless Call Waiting is being used.

Central Station on WATS Line

Select this field if the control is communicating on an 800 telephone number. When selected, this field tells the control to extend the time it waits for a handshake from the receiver.

Checksum Verify- Primary

Select this field to enable the control to send a verification digit to validate the message at the receiver without having to send two message rounds on the primary format. Selection is valid for 3+1, 4+1, and 4+2 reports.

Checksum Verify -Secondary

Select this field to enable the control to send a verification digit to validate the message at the receiver without having to send two message rounds on the secondary format. Selection is valid for 3+1, 4+1, and 4+2 reports.

Dial Tone Detection

This field determines whether the control will wait for a true dial tone before dialing, or if it will wait for a pre-determined delay before dialing (see Dial Tone Pause). Dial tone detection may be necessary in a high telco noise environment where noise may be mistaken for a dial tone.

Dial Tone Pause

This field sets the time the control will pause before dialing. This applies only if true dial tone is not selected in the Dial Tone Detection field.

Dialing Method

Select the method of dialing for the control, either touch-tone or rotary.

Disable Station Initiated Download

Selecting this field prohibits an installer from initiating a download from the computer.

Download Phone

Enter the telephone number that the control will use to call the download computer. This number is used when Download Without Callback feature is disabled.

Download Without Callback

Selecting this field allows the control to get on-line with the computer without requiring the control to call back.

Enable Dual Reporting

This field allows all reports to be sent to both the primary and secondary telephone numbers.

Enable Intelligent Test Reporting

Selecting this field tells the control not to send a test report if any other type of report has been sent since the last test report.

Initiation Day

Select the day that the first test report will be sent.

Initiation Time

Enter the time the first test report will be sent.

Load Transmission Default Values

This field is used to load the communications defaults for the selected format.

No. Reports/Armed Period

Select "10" to limit the number of reports that will be sent to the central station during an armed period. Select "unlimited" to allow all reports to be sent to the central station.

Non Alarm Dialer Report Codes to Central Station

Select from the pulldown menu or enter in the codes that are to be sent to the central station for the system non-alarm codes.

Number of Rings

Enter the number of rings that the control should wait before answering the call for downloading and/or phone module activation. If there is an answering machine on the premises, see Answering Machine Defeat.

PABX Access Code

If a prefix is needed to gain access to an outside telephone line or a call waiting defeat sequence, enter it here. Up to four digits may be entered.

Periodic Test

From the pulldown menu, select the how often test reports are sent.

Primary Phone

Enter the primary central station receiver telephone number.

Primary Speed

Select either Ademco or Sescoa/Radionics if low speed has been chosen for the primary low speed format.

Primary Transmission Format

Select the reporting format to be used on the primary receiver telephone number.

Radionics or Sescoa Transmission

This field determines the inter-digit time in the transmission format. Check with your central station to determine the appropriate format.

Randomize AC Loss Reports

If selected, this will cause the system to report AC loss at a random time between 10-40 minutes after losing AC power. Selecting this option helps prevent an overload of

AC power loss messages at the central station during a community blackout.

Report Codes

Enter the central station report codes.

Report Format

Select the transmission format for reports to the central station.

Restore Report Timing

Select Instant for a report to be initiated immediately upon a zone restoring, At Bell Timeout to have the restore report initiated after the bell times out if the zone has restored, or At Disarm if the report should be initiated when the control is disarmed.

Secondary Phone

This field is used to enter the secondary phone number. It is used if communication on the primary number is unsuccessful, or if split/dual reporting is desired. If this field is programmed, a secondary subscriber account number **must** also be programmed (can be the same as the primary account number).

Secondary Speed

Select either Ademco Low Speed or SESCOA/Radionics.

Secondary Subscriber Acct Number

Enter the secondary subscriber account number.

Secondary Transmission Format

Select the reporting format to be used on the secondary receiver telephone number.

Select Expanded Reports for Primary

Select the reports that are to be sent to central station in

an expanded format.

Select Expanded Reports for Secondary

Select the reports that are to be sent to central station in an expanded format.

Split Reporting

This field allows certain reports to be directed to either the primary or secondary telephone number.

Split/Dual Reports

Select a reporting format based upon which reports should be sent to both the primary and secondary telephone numbers.

Test Interval In Hours

Enter the number of hours between each test report.

Touch tone with Rotary Backup

Select this field to enable Rotary backup dialing if the communicator is not successful on dialing using touch-tone on the first attempt.

Zone Types Reporting Restore

Select the zone types for which restore reports will be sent.

Globals

15 Second Delay Burglary Report

Enable this option for a 15 second delay on all burglary alarm reports except those sent for 24 hour zones.

4285 Voice Phone Codes

Select the first and second digits that will be used to gain access to the control using the 4285 Phone Module.

Audible Exit Warning

When selected, provides keypad sounding during exit delay when arming AWAY or MAXIMUM. The keypad will beep slowly during the exit time, turning into rapid beeping during the last 5 seconds.

Confirmation Of Arming Ding

Selecting this option enables the external sounder to momentarily sound when the system is Armed Away. One ding from the external sounder will occur at the end of the exit delay time or at kissoff from the central station receiver if closing reports are being sent.

Console Programming Mode

When selected, this field allows the installer to use his/her code to enter programming mode through the keypad.

Enable 5800 RF Button Force Bypass

Select this field to allow the RF button user to force bypass all faulted zones. When attempting to arm the system, the keypad will beep once after pressing the button if any zones are faulted. If this feature is enabled, the user should then press the button again within 4 seconds to force bypass those zones and arm the system.

Enable 5800 RF button Global Arm

Enable this field to have the system arm/disarm in accordance with the button user's global arming features.

Enable AC Power Loss Alarm

Select to sound the external siren after AC power has been out for an extended period of time (see control II for specific amount of time).

Enable Beeping Sound on AC Loss

Select to enable sounding at the keypad (rapid beeping) when AC power is lost.

Enable Low Battery Report

Select this field if a trouble message from an RF transmitter is to be sent to the central station.

Enable Power Up in Previous State

Select this field for the control to power up in the state it was in before the power failure. If disabled, the control will power up in the disarmed state.

Enable Supervision for LRR

Select the response types to be supervised. This option causes the control to send periodic short pulses on the J7 radio triggers. These pulses are used by the long range radio to determine that its connection to the control is still intact.

Enable Wireless Keypad Tamper Detection

This field enables supervision on wireless keypad tampers. If more than 40 key depressions are received without a valid sequence (arm, disarm, etc.), the control will disable the wireless keypad. The keypad is enabled again once a valid sequence is entered.

Entry/Exit Delay

Select from the pulldown menu the amount of delay time for entry and exit.

Event Log Types

Select the type of events the control should save to the event log.

Exit Delay Reset

Select this field to reset the Exit Delay to 60 seconds after door is closed.

Exit Error Logic

Selecting this field enables the Exit Error Logic which will cause an exit error if an entry/exit or interior zone is tripped within two minutes of arming.

Forced Bypass

When enabled, this field allows the user to use the Quick Bypass sequence to bypass all the faulted zones.

Ignore Expansion Zone Tamper

This option is used to disable tamper detection on certain polling loop sensors with tamper switches or 5800 series transmitters.

Keyswitch Partition Assignment

Select the partition to which the keyswitch is assigned. The keyswitch can operate only one partition. If assigned, zone 7 can no longer be used as a protection zone (exception Vista-20).

Local Programming Lockout

When selected, this field prohibits entering the programming mode through the keypad. This field is a read only field, and is programmed through the keypad.

Low Battery Annunciation

Select when a low RF transmitter battery should be annunciated at the keypad, either at disarmed state only or any time.

LRR Burg. Trigger for Zone Type 8

When selected, this field allows triggering of the voltage output on pin 7 of the J7 header to include zone response type 8 (24hr. auxiliary).

LRR Output

When selected, any dialer report programmed to report to the primary phone number will also be sent via long range radio.

Open/Close Reports for Keyswitch

Select if open/close reports for the keyswitch are desired.

Printer Baud Rate

If there is a printer hooked up to the control, select the baud rate at which it is set.

Quick Arm

Enables the system to be Quick Armed using the # and Away [2] or # and Stay [3] keys.

Read Only Panel Remote Access Enables

De-selecting a function means that you will not be able to perform that function with respect to the system.

RF Expansion

Select from the pulldown menu the type of Rf receiver that is being used.

RF Monitoring Interval (Hours)

Select the RF receiver monitoring interval in 2 hour intervals.

RF Point Supervision in Hours

Select the RF transmitter monitoring interval in 2 hour increments.

RF Supervision Audible

Select this field to enable trouble sounding for transmitter check-in failure.

Single Alarm Sounding Per Zone

When this field is selected, the zones will sound the outside sounder only once for an alarm condition during an armed period.

Time Format

Select either 12 or 24-hr time format for logging system events.

Use Partition Descriptors

This field allows a four-character descriptor to be displayed on the keypad.

Wireless Keypad Partition Assignment

Select the partition to which the wireless keypad is assigned.

Zone 5 Audio Alarm Verification

Select if 2-way audio (AAV) is used. If selected, zone 5 can no longer be used as a protection point.



Date

Select this button to have the report sorted by date in ascending order.

End

Select from the pulldown box the date the history report will end.

Feature Description

Select this button to have the report sorted by the Feature Description in alphabetical order.

Operator Name

Select this button to have the report sorted by the Operator Names in alphabetical order.

Start

Select from the pulldown box the date the history report will start from.

Partition

Affects Lobby

Enabling this option for a specific partition causes that partition to affect the operation of the common lobby as follows:

- When the first partition that affects the lobby is disarmed, the lobby will also be disarmed.
- The common lobby cannot be armed unless every partition selected to affect the lobby is armed.

Allow GOTO From Other Partitions

Allows this partition to be accessed from another partition using the GOTO command.

Alpha 1

This field reflects the first line of the default message appearing on keypads in the highlighted partition. To change the message, double click on the message in the ALPHA 1 column, type the message you want and press ENTER.

Alpha 2

This field reflects the second line of the default message appearing on keypads in the highlighted partition. To change the message, double click on the message in the ALPHA 2 column, type the message you want and press ENTER.

Arms Lobby

Enabling this option for a specific partition causes that partition to attempt to arm the common lobby.

Burglar Alarm Comm Delay

Enable this option for a 16 second delay on all burglary alarm reports except those sent for 24 hour zones.

Cancel Report After Disarm

If enabled, a cancel report will be sent if an alarm was triggered and then CODE+OFF is entered. If disabled, cancel will only be sent within bell timeout.

Chime on External Siren

Enables the external sounder to mimic the keypad when in the Chime Mode.

Common Lobby

This field determines the partition designated as the "Common Lobby."

Confirmation of Arming Ding

Selecting this option enables the external sounder to momentarily sound when the system is Armed Away. One ding from the external sounder will occur at the end of the exit delay time or at kiss-off from the central station receiver if closing reports are being sent.

Console Annunciation During Entry

This option allows you to choose the type of sound the keypad will make during the entry delay.

Console Annunciation During Exit

Selecting this option enables the console to beep during the exit delay.

Console Panic for Keys (* and #) or (B key) Zone 99 Enable

Enables the console Panic for the * and # keys (zone 99) for the selected partition.

Console Panic for Keys (* and 1) or (A key) Zone 95 Enable

Enables the console Panic for the * and 1 keys (zone 95) for the selected partition.

Console Panic for Keys (# and 3) or (C key) Zone 96 Enable

Enables the console Panic for the # and 3 keys (zone 96) for the selected partition.

Current Partition

From the pulldown menu, select the partition number you are programming.

Default Console Message

Displays the combined message from the ALPHA 1 and ALPHA 2 columns. The message can be modified directly in the Default Console Message box or in the ALPHA 1 and ALPHA 2 columns.

Descriptor

Select this field to enter a descriptor for any of the available partitions.

Dialer Reports For:

Panic [*] and [1] or [A]

Enables a report sent to the central station when the [*] and [1] keys on the system keypad are pressed at the same time, or when the [A] key on the keypad is pressed.

Panic [#] and [3] or [C]

Enables a report sent to the central station when the [#] and [3] keys on the system keypad are pressed at the same time, or when the [C] key on the keypad is pressed.

Panic [*] and [#] or [B]

Enables a report sent to the central station when the [*] and [#] keys on the system keypad are pressed at the same time, or when the [B] key on the keypad is pressed.

Duress

Enables a report sent to the central station when the duress code is entered at the system keypad.

Entry Delay #1 (seconds)

Enter or select from the pulldown menu how long the Entry Delay #1 should be.

Entry Delay #2 (seconds)

Enter or select from the pulldown menu how long the Entry Delay #2 should be.

Exit Delay #1 (seconds)

Enter or select from the pulldown menu how long the Exit Delay #1 should be.

Exit Delay #2 (seconds)

Enter or select from the pulldown menu how long the Exit Delay #2 should be.

J7 Trigger Outputs

Assigns the J7 trigger outputs to this partition.

Multiple Alarms Per Arming Enable

Allows more than one alarm on a given zone during an armed period. However, multiple alarm soundings will not occur more frequently than allowed by the programmed alarm sounder duration. This selection is local only and does not affect the number of communications reported to central station. Refer to Swinger Suppression to limit communication messages.

Name

This field is used to further identify the descriptor field but it is displayed only in the downloader. Enter a description of the selected partition.

Non-Bypassable Zone Select

Entering a zone number prevents that zone from being bypassed by the user. Enter 00 if this feature is not desired (all zones can be bypassed). This does not affect fire zones, which the control prevents from being bypassed.

Part

This field reflects the number of partitions in the alarm system. This field requires no entry.

Permanent Backlight Enable

Enable to have the backlight for the keypad displays lit permanently.

Primary Sub ID

Select (by double-clicking the field); then enter the 3 or 4 digit primary central station account number for that partition.

Quick Arm Enable

Enables the selected partition to be Quick Armed using the # and Away [2] or # and Stay [3] keys.

Secondary Sub ID

Select (by double-clicking the field); then enter the 3 or 4 digit secondary central station account number for that partition.

Sounder Timeout Duration

Type in or select how long the external sounder will ring before it times out.

Speed Key Macro

The “D” key (on the keypad) can be used to activate a string of up to 16 keystrokes. These keystrokes are known as a macro and are stored in the system’s memory. Each partition may have its own macro. Typical Speed Key functions include:

- Arming sequences that involve bypassing certain zones and then arming.
- Seldom used but repeatable sequences.
- Relay activation sequences.

Enter up to 16 keystrokes. A speed key sequence can include different commands such as:

Desired Function	Entry
GOTO partition 2	*2
Bypass Zones 10 & 11	6, 10, 11
Arm in maximum mode	4
Return to partition 1	*1

A space must be entered between each command.

To program the speed key sequence, enter *2[D]61011[D]4[D]*1[D][D] in the Speed Key Macro field.

Swing Suppress Count

This option limits the number of messages (Alarms or Troubles) sent for a specific channel in an armed period. Select 1-15 or 00, which allows an unlimited number of reports to be sent.



Access Control Relay

The system can be programmed to provide user activated access control. When a relay is assigned, it will pulse for 2 seconds when the user enters his/her code followed by "0".

Action

Select the action this relay is to perform when activated.

Current Relay

Select the relay for which the relay descriptor is being programmed.

Description

Type in a description of this relay. This description is for operator reference only.

Event

If this relay is assigned to a zone list, an event (alarm, fault, etc.) from any zone on that list can activate the relay.

Group #

Enter the group number if this relay is to be grouped with other relays for common activation.

Long (x 2 minutes)

This field is used to program the amount of time (00-127 minutes) relay commands 04/09 will be activated. The selection is multiplied 2 times (e.g. 10 x 2 = 20 minutes).

New Version

This field displays the words that are being programmed. To select words for the new descriptor, double click on the words from the list.

Output #

Select the output (relay) number to be programmed.

Partition

If this relay is to be activated by one particular partition, select that partition. If it can be activated by any partition, select Any Partition.

Present Version

This field displays what is currently programmed for the selected relay.

Relay Zone Lists

A zone list is used to group zones so that if any of those zones are tripped, they can trigger a device.

Restrict

Select this field if the end user will be restricted from accessing this relay. The system may have some devices which are not intended to be under end user control, such as relays activating fire doors or machinery.

Short (Seconds)

This field is used to program the amount of time (00-127 seconds) relay commands 05/10 will be activated.

Type (Device)

Select the relay type you are using, either 4204 or X-10.

Type (Start and Stop Parameters)

If this relay can be activated or deactivated by a particular zone response type (entry/exit, fire, 24 hour panic, etc.) or system operation (chime, kissoff, etc.), select that type.

Word

Select the word in the descriptor to program (One, Two, or Three). Then double click on the word desired. If programming the entire descriptor, you may simply select (double-click) on each word, and the word number will be reflected by your selections. If words are large, only two words may be allowed for the descriptor.

Zone List

Select the zone list number each zone belongs to if this relay can be started or stopped by multiple zones.

Schedule

Action

Select the action to be performed from the pulldown list.

Activation Time

Select the point at which the event will occur with reference to the assigned time window (i.e. at the start of the window).

Daylight Savings Time

Enter or select the month and day for the beginning and end of daylight savings time.

Disarm Only During Disarm Window

Select this field if disarming of the system should be allowed only during the arming/disarming windows, or if the system is in alarm (if Disarm Outside Window if Alarm is selected). This applies only to operator level users. Installer, Master, and Manager level users can disarm the system at any time.

Disarm Outside Window if Alarm

Select this field to allow the system to be disarmed outside the programmed disarm (opening) window if an alarm has occurred. This field is applicable only if Disarm Only During Disarm Window is selected.

Event #

Select the event number to be programmed.

Event Active Days

Select the days this scheduled event is to be active.

Event Description

Enter the description for the selected event. This description will also appear on the USER TIMERS screen.

Force Arm for Auto-Arm

Selecting this field causes the control to attempt to bypass any faulted zones prior to auto-arming.

Holiday Schedule

This screen is used to setup the holiday schedule and apply it to the partitions. Decide the holiday number to edit, then click on the DATE box and select the month and date of the holiday. Click on APPLY to have that date entered for the selected holiday. If the holiday already has a date selected, clicking on the UNUSED button will clear the date. The arrows that point up and down let you move through the holiday list. When done, select the CLOSE button.

Open/Close Reports by Exception

This option allows a means of reporting openings and closings by exception (sent only if arming or disarming occurs outside of the predetermined opening/closing time windows). The system also sends missed open/close reports if no opening/closing occurs by the end of the corresponding window.

Partition

Select the partition to be programmed.

Partition Auto Arm Times (Minutes)

Delay- Select the time between the end of the arming window and the start of the auto arm warning time.

Warning- Enter the time the user is warned by a keypad sounding and display to exit the premises prior to auto arming of the system.

Disarm- Enter the time between the end of the disarming window and the start of auto disarming of the system.

Partition Temporary Schedule

Each partition can be assigned a Temporary Schedule which will override the regular open/close schedule (and the holiday schedule). This schedule takes effect as soon as it is programmed and remains active for up to one week.

Partition Open/Close Schedule

Select the Time Windows that apply to each partition for opening and closing.

Report Codes

Select from the pulldown menu or enter the report codes to be sent to central station.

Schedule Access Limitations

A user's access can be limited to a certain time period, during which he can perform system functions. Outside this time, that user's code will be inactive. The system provides up to 8 Access Schedules, each consisting of 2 Time Windows (one for opening, one for closing) for each day of the week and 2 time windows for holidays. If a user tries to operate the system outside the schedule, the alpha keypad will display "Access Denied." The Access Limitations are assigned to users in the Users screen.

Time Window

From the pulldown menu, select the time window this programmed event will follow. To view the programmed time windows, click on the VIEW TIME WINDOWS button.

Time Window Schedule

Enter the start and stop time for each time window. Scheduled events are based on time windows, which are simply periods of time during which an event may take place. Time windows are defined by a start time and stop time. The system supports up to 20 Time Windows. The windows are shared by all the partitions, and the windows are used for open/close schedules as well as for time driven event control.

User Timers

This screen is used to program the timers. The timers can be programmed by the user through the keypad or by a technician through the downloader.

Select the times and days for each timer and device. If any timer is to be used on a permanent basis, select the PERM box.

View Time Windows

Click on this button to view or program the time windows.

**Access Code**

Enter the 4-digit user access code for this user.

Access Group

Users assigned to an Access Group number will follow the Access Schedule of the same number (i.e., Access Group 1 follows Access Schedule 1). If no corresponding Access Schedule is defined, the users' access will not be limited.

Comments

Enter any comments that pertain to this user.

Current Users

This screen is used to view and enter the user information. To edit a user, select the user from the list and click on the EDIT button. To add a user, click on the next available slot or, any blank slot, and click on ADD. The user's information is added to the next screen displayed.

Master Part.

Select the master partition to which the code is assigned.

Partition Options

This field is used to assign the authority levels to this user for each applicable partition, whether open/close reports or Global Arming is desired, and for which partitions.

RF Information

Utilize this field for assigning an RF button device to this user. Enter only 1 zone number from the button device.

User Name

Enter the name of the person to which this code is assigned. This information is for reference only and is not resident in the control panel.



Activate Reporting Zones

This button becomes active when Contact ID has been selected as the reporting format and a central station telephone number is programmed in the Dialer screen.

All

Select this button to have all the words displayed.

Alpha 1

Select, then type in the first word of the message to be displayed on the keypads for that partition.

Alpha 2

Select, then type in the second word of the message to be displayed on the keypads for that partition.

Alpha 3

Select, then type in the third word of the message to be displayed on the keypads for that partition.

Cross Zoning Pairs

Enter two zones that need to be faulted within five minutes of each other to cause an alarm. Up to four pairs of zones can be selected.

Current Zone

Select the zone to be edited from the pulldown menu or using the (+) or (-) buttons.

Custom

Select this button to display custom words.

Custom Words

Select the ADD button to enter a new custom word.

Description

Type in a description for this zone. This description will be shown in other screens for reference.

Edit Alpha

Click on this button to edit the alpha descriptors for the zones.

Input Type

Select the input type for the zone being used from the pulldown menu.

The choices are:

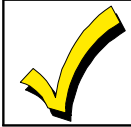
- 0 Not used
- 3 Supervised RF
- 4 Unsupervised RF
- 5 RF Button type
- 6 Serial # Polling Loop
- 7 Dip Switch Type Polling
- 8 Right Loop/Dip Switch Type Polling



Note: All zones must be programmed with a zone type, input type, and loop number.

Loop

All expansion devices have a designated loop number or loop numbers. Devices with only one input are always designated as loop one. Devices with up to four inputs are designated as loops 1-4.



Note: All zones must be programmed with a zone type, input type, and loop number.

Part

Enter the number of the home partition to which this keypad is assigned.

Response

Select the response type for the corresponding zone. Some zone response types listed may not be available on all controls. Zone response types are:

- 00= Not Used
- 01= Entry/Exit #1, Burglary
- 02= Entry/Exit #2, Burglary
- 03= Perimeter, Burglary
- 04= Interior Follower, Burglary
- 05= Trouble by Day/Alarm by Night
- 06= 24 Hour Silent Alarm
- 07= 24 Hour Audible Alarm
- 08= 24 Hour Auxiliary
- 09= Fire
- 10= Interior Delay, Burglary
- 16= Fire with Verification
- 17= Fire Waterflow
- 18= Fire Supervisory
- 19= 24-Hour Trouble
- 20= Armed Stay
- 21= Armed Away
- 22= Disarmed
- 23= No Alarm Response (used for relay activation)

RPT

This field is a read only field. This field reflects what is programmed in the Dialer fields where the report codes are programmed.

Serial #

Enter the serial number for the corresponding serial number device.

Spoken

Select this button to display the words that can be spoken by the VIP module.

Voice

Select this button to substitute a word that can be spoken for a custom word that can not.

Word

Select the word to be edited (One, Two, Three). The word that corresponds to the number will appear next to the button marked DELETE. If no word has been programmed yet, then DELETE will be alone. If the word selected needs to be pluralized, click on the ADD SUFFIX button.

Zone #3 Response Time

Select normal (400ms) or fast (10ms) response time for zone 3. Select fast response for devices that have a very fast trigger such as glass break detectors.

Zone 2-8 EOLR

Select this field if zones 2-8 are end of line resistor supervised.

Zone 9 Response

Select normal (350ms) or fast (10ms) response time for zone 9. Select fast response for devices that have a very fast trigger such as glass break detectors.

Zone 1-8 Response Time

Select the appropriate response time (10, 350, 700 milliseconds) for the protection devices being used.

