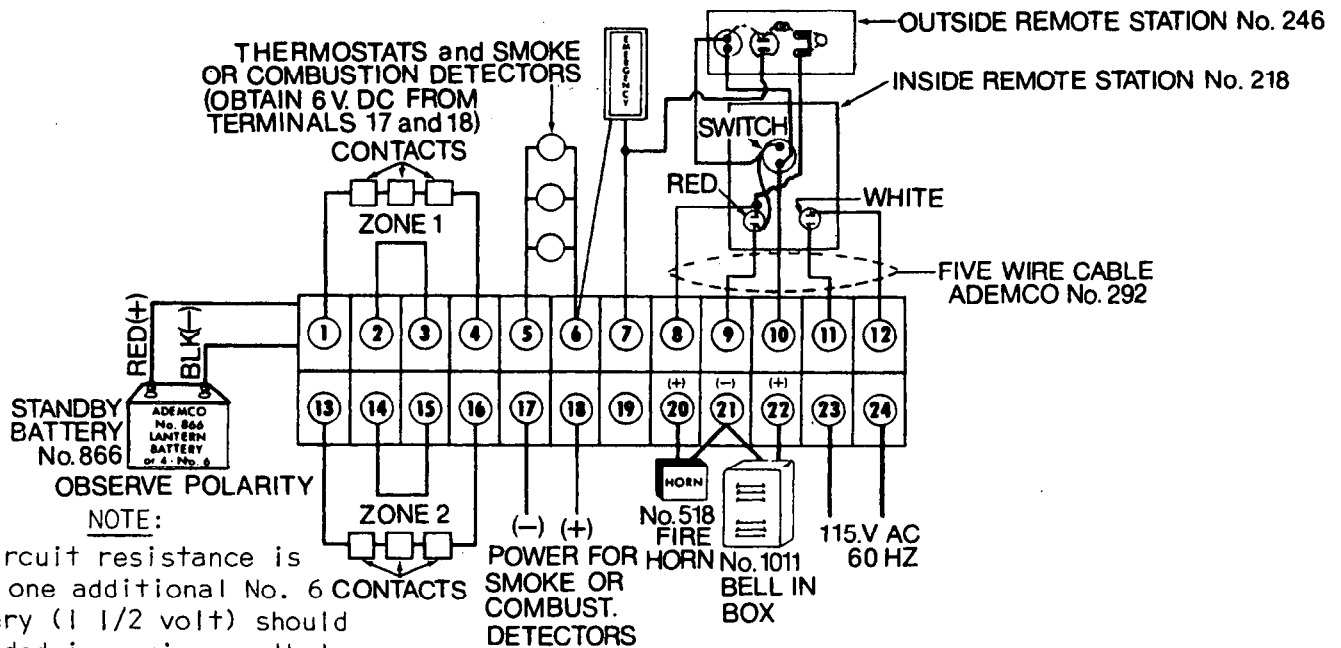


No. 330 COMBINATION ALARM SYSTEM



NOTE:
If circuit resistance is high, one additional No. 6 battery (1 1/2 volt) should be added in series so that set up is assured in the standby condition.

TERMINALS

Short Circuit Lamp:

1-2-3-4

Zone 1

5-6

Thermostats & Smoke Detectors

6-7

Emergency Buttons

8-9-10-11-12

Remote Stations

WIRING INSTRUCTIONS

If a short circuit develops in either Zone 1 or Zone 2 of the protective circuit, a lamp (Ademco No. 47) on the left hand side of the chassis will light. To test lamp, short terminals 3 and 4. If lamp is burned out, panel will not arm (WHITE lamps on remote stations won't light).

Protective Circuit. Start at Terminal 1 & 2 with two conductor wire. Return wire to Terminals 3 & 4. Add closed circuit contacts in series between 1 & 4 as shown. For easy troubleshooting, protective circuit may be divided into two zones (see terminals 13-16).

Wire No. 502 and No. 504 Thermostats and alarm contacts of smoke detectors in parallel as shown.

Wire as shown using No. 219 normally open momentary contact buttons. Additional No. 219 buttons may be wired in parallel.

Wire No. 218 or No. 218L Inside Remote Stations as shown, using No. 292 fire wire cable. Wire Outside Remote so that key lock switch at entrance door connects to Terminals 9 & 10; unused terminal on red light is wired to Terminal 8. Unused terminal on panic button is wired to Terminal 7; or wire in parallel to other like components as shown.

13-14-15-16

Zone 2

Protective circuit for second zone. Convenient for isolating trouble by dividing circuit. Also ideal for mats, photocells, ultrasonics, etc. Mats must be installed with No. 602 Coupler. Zone may be turned OFF by zone switch on panel.

17-18

Power for Smoke Detector(s)

6V. DC output for Smoke Detectors.
POLARITY MUST BE OBSERVED.

19

Not used.

20-21

Horn sounds for fire. Use Ademco No. 518 Horn. (No. 700 Siren may also be used).

6V D.C. Fire Horn

21-22

OUTDOORS use No. 1011 Bell-in-box. INDOORS use No. AD-8 Bell. (No. 700 Siren may also be used).

6V D.C. Burglar Bell

23-24

To 115V A.C. - replace terminal cover after connecting wires.

When connecting additional remote stations, emergency buttons, or thermostats, wire in parallel. Connect these devices either directly to the terminal strip on the control or to the corresponding rear connections on any like device already installed, depending upon which method results in the shortest wire runs.

To turn system ON, turn key to right and allow key to spring back. To turn system OFF, turn key to right again. When using push button remote stations, push to turn ON, push again to turn OFF. When emergency buttons, thermostats, or smoke detectors are operated, the system must be reset by depressing the RESET button. (Thermostats reset only after they have cooled. Smoke detectors reset only after smoke has been removed).

CAUTION: DO NOT RESET CIRCUIT BREAKERS UNLESS REASON FOR "TRIP" HAS BEEN CORRECTED.