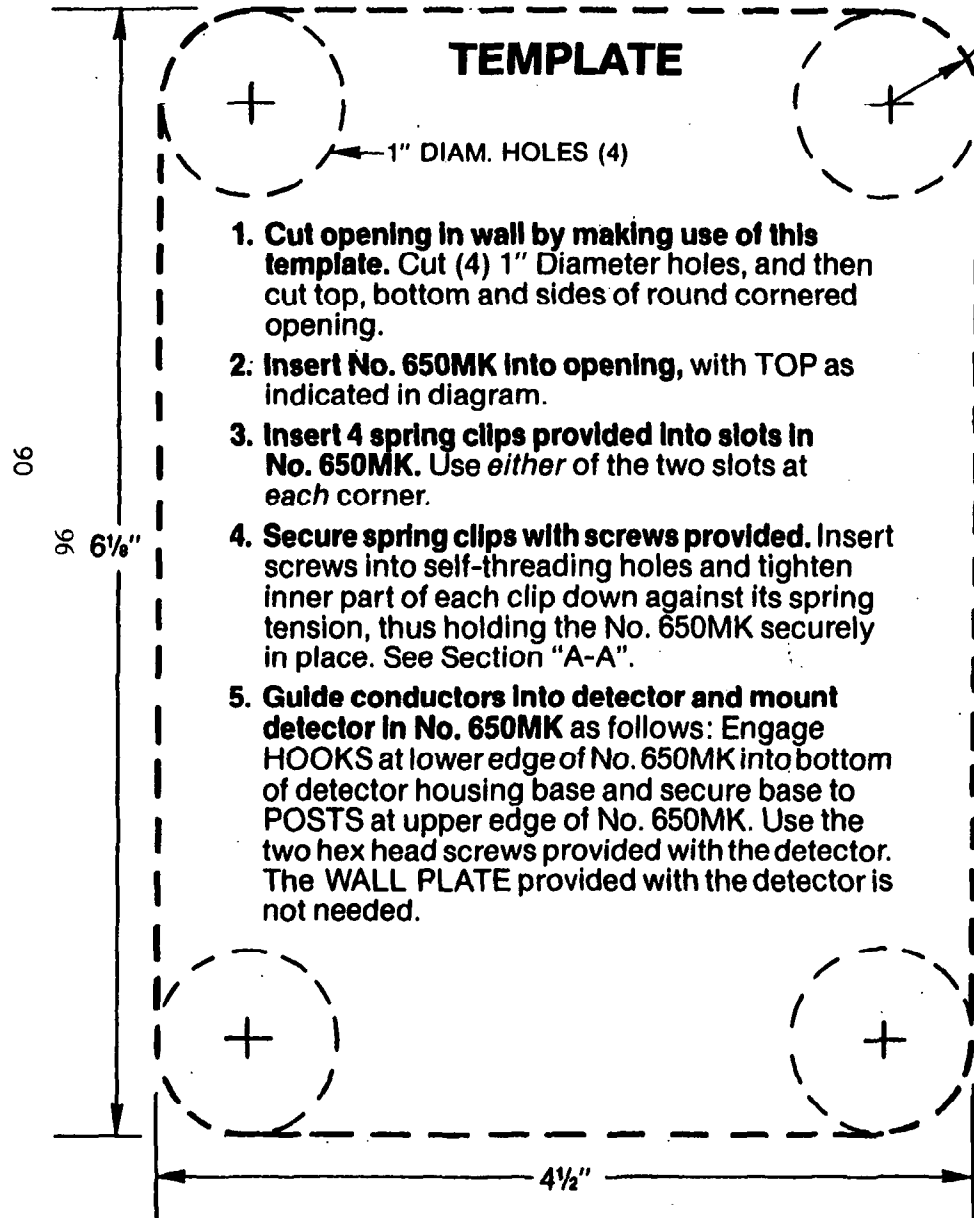


ADEMCO
SONTRIX

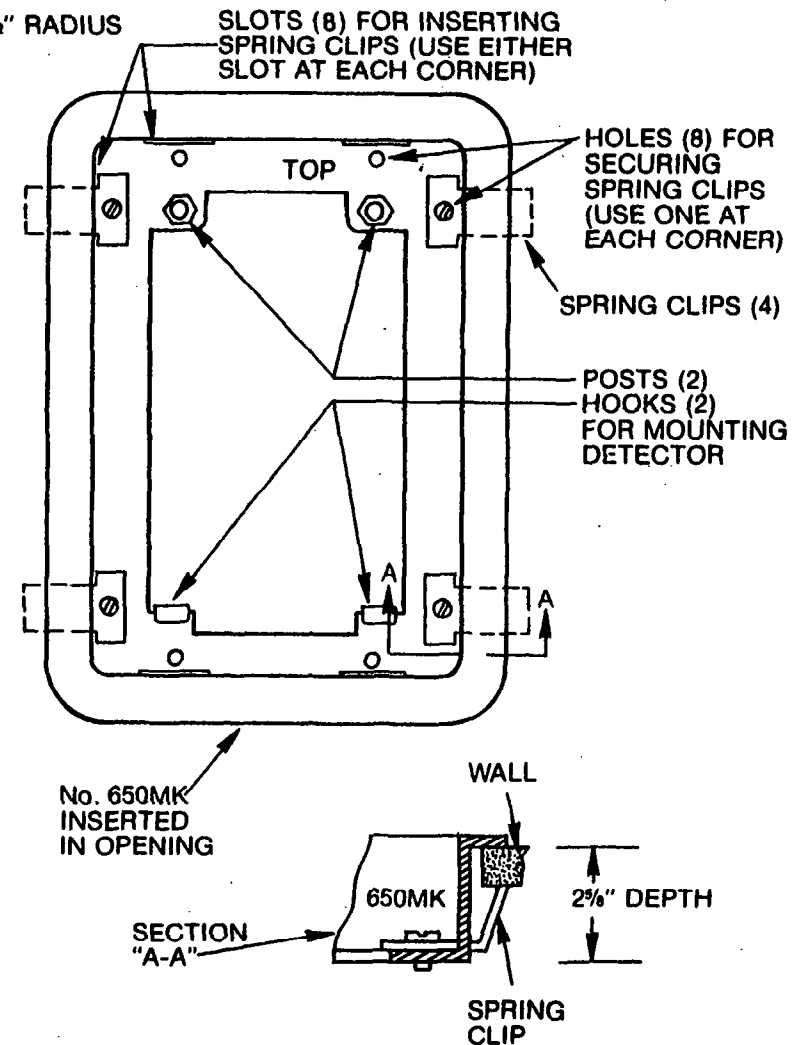
INSTALLATION INSTRUCTIONS

650MK FLUSH MOUNTING KIT

for Nos. 650, 651 Series
Passive Infrared Motion Detectors



1. Cut opening in wall by making use of this template. Cut (4) 1" Diameter holes, and then cut top, bottom and sides of round cornered opening.
2. Insert No. 650MK into opening, with TOP as indicated in diagram.
3. Insert 4 spring clips provided into slots in No. 650MK. Use either of the two slots at each corner.
4. Secure spring clips with screws provided. Insert screws into self-threading holes and tighten inner part of each clip down against its spring tension, thus holding the No. 650MK securely in place. See Section "A-A".
5. Guide conductors into detector and mount detector in No. 650MK as follows: Engage HOOKS at lower edge of No. 650MK into bottom of detector housing base and secure base to POSTS at upper edge of No. 650MK. Use the two hex head screws provided with the detector. The WALL PLATE provided with the detector is not needed.



ADEMCO
PROVED PERFORMANCE

ALARM DEVICE MANUFACTURING CO.

A DIVISION OF PITTMAY CORPORATION

165 Eileen Way, Syosset, New York 11791

P8223 8/81 Copyright © 1981 PITTMAY CORPORATION