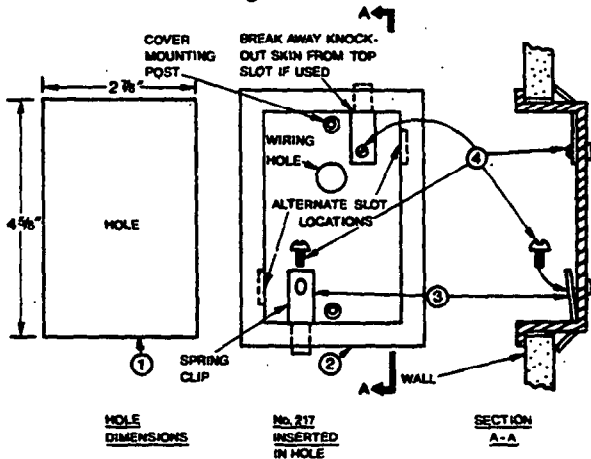




INSTALLATION INSTRUCTIONS

**No. 217
RECESSED
WALL BOX**

For Use With Digital Remote Stations



- 1 Cut 2 7/8" x 4 5/8" hole in wall. Use back of No. 217 as template.
 - 2 Insert No. 217 in hole.
 - 3 Insert Spring Clips (provided) through opposite slots from inside of No. 217. Use top and bottom or upper and lower side slots as space inside wall permits.
- Note: Top slot has knock-out "skin" which must be broken away before clip can be inserted.
- 4 Secure Spring Clips. Insert screws provided through holes in clips and thread into holes in base of box. Force inner part of clips dom against their spring tension, thus holding box securely in place.



ALARM DEVICE MANUFACTURING CO.

A DIVISION OF AT&T CORPORATION

165 Eileen Way, Syosset, New York 11794
P4820 11/79