



REMOTE KEYPADS 6128, 6137, 6137R, 6138, 6139, & 6139R 6139AV (These Keypads Do Not Use DIP Switches)

INSTALLATION GUIDE

KEYPAD FEATURES	6128 Fixed-Word Keypad	6137/6137R Fixed-Word Keypad	6138 1-Line Alpha Keypad	6139/6139R 2-Line Alpha Keypad	6139AV Voice 2 Line Alpha
Backlit Display	No	Yes (see Note Below)	Yes (see Note Below)	Yes (see Note below)	Yes
Dedicated Panic Keys	No	Yes	Yes	Yes	Yes
Flush Mount Option	No	No	Yes	Yes	no
All the above keypads have backlit keys, are keypad addressable, have a Red "ARMED" indicator and a Green "READY" indicator.					
ADEMCO CONTROLS	▼	▼	▼	▼	▼
VIA16*	Yes	Yes, 6137	No	No	No
VIA30P†*	Yes	Yes, 6137	Yes	Yes, 6139	No
VISTA 10†*/VISTA 20†*	Yes	Yes, 6137	Yes	Yes, 6139	No
4120XM†*	Yes	Yes, 6137	No	Yes, 6139	No
4140XMP */VISTA 40†**	Yes	Yes, 6137	No	Yes, 6139	Yes
Vista-50†**/Vista-50 UL†**	Yes	Yes, 6137	No	Yes, 6139	No
5110XM†*/5120XM†*	No	Yes, 6137 or 6137R***	No	Yes, 6139 or 6139R***	No
5140XM†**/VISTA-100†**	No	No	No	Yes, 6139 or 6139R***	No

† A 2-Line alpha-numeric display keypad must be used to program these controls.

* Use non-addressable mode with this controls (set to address 31)

** Use addressable mode (addresses 00-30).

*** Console color subject to approval of local authority having jurisdiction.

Note: Permanent display backlighting is an option on some controls - see the control's instructions.

GENERAL INFORMATION

The 6128, 6137, 6137R, 6138, 6139, 6139R, and 6139AV Remote Keypads are keypad addressable (no DIP switches) and are intended for use with the controls listed in the table above. They can be set for the non-addressable operation (address 31) if required by the control with which they are used.

NOTE: The 6137R and 6139R have red bezels instead of gray. Otherwise, they are exactly the same as the 6137 and 6139, respectively.

The display on a Fixed-Word Keypad provides 2-digit numerics for zone identification and a set of pre-designated English language prompts (e.g., "ALARM," "AWAY," "STAY," "CHECK," etc.) for indicating the system's status.

A 2-line Alpha Keypad is equipped with a programmable 2-line, 32 character (16 character per line) English language display for complete zone identification (if descriptors are programmed), plus system status. The 6139AV is an alpha keypad with a built in speaker and microphone to be used with a VIM (2-Way Voice) module.

6138, One-Line Display Keypad: Some controls (e.g. Via30P, VISTA10, VISTA20) send two 1-line displays of information to the 6138 keypad. To display the second line of information, press the [#] key. Press the [#] key again to return to the first line of information. The display automatically returns to the first line of information if no key is pressed for 3 seconds.

NOTE: After pressing the [#] key to view the second line or return to the first line, wait at least 3 seconds before entering a control panel command (e.g., arm the system).

The keys on the keypads are located behind a decorative door, and are continuously backlit for convenience. The inside of the decorative door has space for a zone ID label (supplied) on which the installer can write descriptions of each zone for handy user reference.

All keypads allow Panic Alarm activation (if enabled in control programming). For the 6128, panic alarms are activated by pressing key pairs **1 & ***, *** & #**, and **3 & #**. The 6137/6137R, 6138, 6139/6139R, and 6139AV are equipped with dedicated single keys for panic activation — keys A, B, and C (the D key is not used as panic), which are equivalent to the **1 & ***, *** & #**, and **3 & #** keys, respectively.

Single panic keys (A, B, and C) must be held down for at least 2 seconds to activate an alarm.

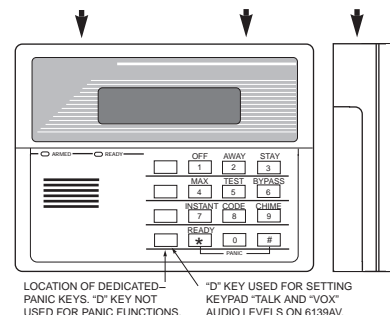
A set of adhesive backed labels with some typical "panic" symbols (i.e., fire, police, personal emergency, etc.) is provided which can be placed on or next to these keys to identify each key's function for the end user (as determined by the control panel's capability and programming, see the control's instructions).

NOTE: That the function of the green "READY" LED (system ready) differs from the function of the green LED on Ademco's 4137AD, 5137AD and 6127 keypads.

WIRING AND INSTALLATION

The keypads can be surface mounted directly to a drywall, or to a single or double gang electrical box. For flush mounting the 6138 and 6139/6139R to drywall, use the optional 6139TRK flush mount kit (6128 & 6137/6137R /6139AV cannot be flush mounted).

1. **Remove the case back by pushing down two "snaps".** See diagram below.
2. **Route wiring** from the control panel through the opening in the case back.
3. **Mount the case back** to a wall or electrical box.
4. **Plug the supplied flying lead connector into the keypad PC board** and splice the panel wiring to it. Wire keypads and functions are described in the SPECIFICATIONS section.
5. **Re-attach the keypad** to its case back.
6. **Remove the clear protective films** from the LCD display and keypad labels.



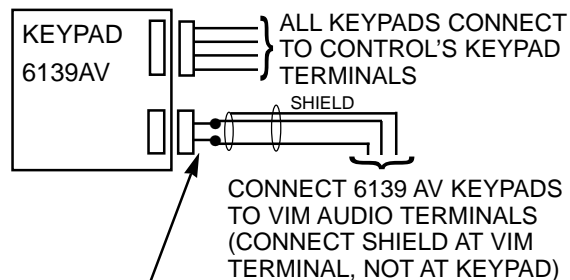
Remove case back by pushing down 2 "snaps" along the keypad's top edge and pulling the case apart.

LOCATION OF DEDICATED-PANIC KEYS. "D" KEY NOT USED FOR PANIC FUNCTIONS. "D" KEY USED FOR SETTING KEYPAD "TALK AND VOX" AUDIO LEVELS ON 6139AV.

6139AV KEYPAD AUDIO CONNECTION FOR 2-WAY VOICE OPERATION

1. Follow the instructions for WIRING AND MOUNTING above.
2. The 6139AV requires a shielded 2-wire connection to a Voice Interface Module (VIM). Splice the flying leads of the supplied SA550AB Audio Bus connector to this shielded cable, then plug the connector into the 6139AV keypad's J5 connector located along the lower right-hand side of the PC board.

IMPORTANT: Connect the shield at the VIM module, not at the keypad, as shown in the VIM's wiring diagram.



USE SA550AB AUDIO CONNECTOR SPLICED TO SHIELDED CABLE WHEN USING 6139AV KEYPAD

Setting the keypad Address (no DIP switches)

The keypad can be set for an address of 0-31 (the keypad will not accept entries greater than 31) which is stored in EEROM memory. The keypad's default address is 31 (non-addressable mode—some early versions of 6139/6139R default to 11).

NOTE: For operation with the VIM, the 6139AV can only be set to addresses 01-15. Address 00 is reserved for a two-line alpha non-voice keypad.

To change the keypad's address, do the following:

1. **Enter address mode:** Power-up (plug-in) the keypad. Within 60 seconds of power-up, press and hold down the [1] and [3] keys at the same time for 3 seconds. (If unable to enter address mode, power-up and try again).

The current keypad address will be displayed, and the cursor will be under the "tens" digit. If 10 seconds have passed with no key entry, the keypad automatically exits address mode. You must power down, power-up and start address mode again.

NOTE: The keypad will not enter address mode if the panel to which it is connected is in programming mode.

2. **Set the current address to "00":** Press [0] to clear the current "tens" digit. The cursor will move to the "ones" digit position. Press [0] to clear the current "ones" digit. The cursor will move back to the "tens" digit position.
3. **Enter the keypad's address:** Enter the proper "tens" digit of the keypad's address. The cursor will move to the "ones" digit position. Enter the proper "ones" digit of the keypad's address. Note that address "31" sets the keypad to non-addressable mode.
4. **Exit address mode:** Press [*] to save the displayed address and exit address mode.

Viewing the Keypad Address

Press and hold down the [1] and [3] keys at the same time for about 3 seconds. The current address is displayed. No key entry is allowed. Press any key to exit or wait 10 seconds to exit viewing mode.

6139AV Keypad Audio Level Selection

The "talk" and "vox" volume of the 6139AV keypad can be programmed for "high," "medium," or "low." The factory default is "high."

1. Enter the keypad's programming mode by pressing and holding down the [1] and [3] keys at the same time for 3 seconds. The keypad's address is displayed.
2. Press and hold hold down the "D" key for 2 seconds. The current "talk" level is displayed (high, medium, or low).
3. Press the [#] key repeatedly to toggle the level settings from high to medium to low until the desired level is displayed.
4. Press and hold the "D" key until the "vox" level is displayed
5. Repeat step 3.
6. Press (*) to exit keypad programming mode.

Notes:

The keypad returns to normal mode if no key is pressed for 30 seconds.

Powering down the keypad does not change the level setting.

Specifications:

Physical

6128: 4-3/4"H x 5-3/4"W x 1"D (121mm x 146mm x 25.4mm)
6137/6137R: 4-3/4"H x 6-1/4"W x 1"D (121mm x 159mm x 26mm)
6138/6139/6139R/6139AV: 4-3/4"H x 6-3/4"W x 1-1/4"D
(121mm x 159mm x 32mm)

Wiring:

Red:	+12VDC
Black:	ground.
Blue:	If present, not used.
Green:	Data to control panel.
Yellow:	Data from control panel

Current:

6128:	30mA sounder on, 25mA standby, alarm sounder off.
6137/6137R:	85mA (ARMED LED lit, LCD backlight and sounder on), reduces to 40mA when panel is operating in standby mode (backlight off).
6139/6139R:	100mA (ARMED LED lit, LCD backlight and sounder on), reduces to 40mA when panel is operating in standby mode (backlight off).
6139AV:	200mA (Armed LED lit, LCD backlight and sounder on); reduces to 55mA when panel is operating in standby mode (backlight off).

Displays:

6138:	1 x 16 alpha-numeric supertwist LCD, backlit.
6139/6139R/ 6139AV:	2 x 16 alpha-numeric supertwist LCD, backlit.
6128, 6137:	Fixed-Word LCD (6137 backlit).

Sounder:

(all Keypads)	Piezo-electric (fire alarm is loud, pulsing single tone); burglary alarm is loud, continuous, dual tone).
6139AV:	0.2W speaker

REFER TO INSTALLATION INSTRUCTIONS FOR THE CONTROL PANEL FOR DETAILS ON LIMITATIONS OF THE ENTIRE ALARM SYSTEM.

ADEMCO LIMITED WARRANTY

Alarm Device Manufacturing Company, a Division of Pittway Corporation, and its divisions, subsidiaries and affiliates ("Seller"), 165 Eileen Way, Syosset, New York 11791, warrants its products to be in conformance with its own plans and specifications and to be free from defects in materials and workmanship under normal use and service for 24 months from the date stamp control on the product or, for products not having an Ademco date stamp, for 12 months from date of original purchase unless the installation instructions or catalog sets forth a shorter period, in which case the shorter period shall apply. Seller's obligation shall be limited to repairing or replacing, at its option, free of charge for materials or labor, any product which is proved not in compliance with Seller's specifications or proves defective in materials or workmanship under normal use and service. Seller shall have no obligation under this Limited Warranty or otherwise if the product is altered or improperly repaired or serviced by anyone other than Ademco factory service. For warranty service, return product transportation prepaid, to Ademco Factory Service, 165 Eileen Way, Syosset, New York 11791.

THERE ARE NO WARRANTIES, EXPRESS OR IMPLIED, OF MERCHANTABILITY, OR FITNESS FOR A PARTICULAR PURPOSE OR OTHERWISE, WHICH EXTEND BEYOND THE DESCRIPTION ON THE FACE HEREOF. IN NO CASE SHALL SELLER BE LIABLE TO ANYONE FOR ANY CONSEQUENTIAL OR INCIDENTAL DAMAGES FOR BREACH OF THIS OR ANY OTHER WARRANTY, EXPRESS OR IMPLIED, OR UPON ANY OTHER BASIS OF LIABILITY WHATSOEVER, EVEN IF THE LOSS OR DAMAGE IS CAUSED BY THE SELLER'S OWN NEGLIGENCE OR FAULT.

Seller does not represent that the products it sells may not be compromised or circumvented; that the products will prevent any personal injury or property loss by burglary, robbery, fire or otherwise; or that the products will in all cases provide adequate warning or protection. Customer understands that a properly installed and maintained alarm may only reduce the risk of a burglary, robbery, fire or other events occurring without providing an alarm, but it is not insurance or a guarantee that such will not occur or that there will be no personal injury or property loss as a result. CONSEQUENTLY, SELLER SHALL HAVE NO LIABILITY FOR ANY PERSONAL INJURY, PROPERTY DAMAGE OR OTHER LOSS BASED ON A CLAIM THE PRODUCT FAILED TO GIVE WARNING. HOWEVER, IF SELLER IS HELD LIABLE, WHETHER DIRECTLY OR INDIRECTLY, FOR ANY LOSS OR DAMAGE ARISING UNDER THIS LIMITED WARRANTY OR OTHERWISE, REGARDLESS OF CAUSE OR ORIGIN, SELLER'S MAXIMUM LIABILITY SHALL NOT IN ANY CASE EXCEED THE PURCHASE PRICE OF THE PRODUCT, WHICH SHALL BE THE COMPLETE AND EXCLUSIVE REMEDY AGAINST SELLER. This warranty replaces any previous warranties and is the only warranty made by Seller on this product. No increase or alteration, written or verbal, of the obligations of this Limited Warranty is authorized.



ALARM DEVICE MANUFACTURING CO.
A DIVISION OF PITTPWAY CORPORATION
165 EILEEN WAY, SYOSSET, NEW YORK 11791
COPYRIGHT © 1997 PITTPWAY CORPORATION